

Strategic Planning and Funding



# **Enrollment Forecast 2017-2030**

**Texas Institutions of Higher Education**

**January 2017**



## Texas Higher Education Coordinating Board

Robert "Bobby" Jenkins Jr., CHAIR	Austin
Stuart W. Stedman, VICE CHAIR	Houston
David D. Teuscher, MD, SECRETARY TO THE BOARD	Beaumont
Arcilia C. Acosta	Dallas
S. Javaid Anwar	Midland
Fred Farias III, OD	McAllen
Ricky A. Raven	Sugarland
Janelle Shepard	Weatherford
John T. Steen Jr.	San Antonio
Haley E.R. DeLaGarza, STUDENT REPRESENTATIVE	Houston

Raymund A. Paredes, COMMISSIONER OF HIGHER EDUCATION

### Agency Mission

The mission of the Texas Higher Education Coordinating Board is to provide leadership and coordination for the Texas higher education system and to promote access, affordability, quality, success, and cost efficiency through *60x30TX*, resulting in a globally competitive workforce that positions Texas as an international leader.

### Agency Vision

The THECB will be recognized as an international leader in developing and implementing innovative higher education policy to accomplish our mission.

### Agency Philosophy

The THECB will promote access to and success in quality higher education across the state with the conviction that access and success without quality is mediocrity and that quality without access and success is unacceptable.

The Coordinating Board's core values are:

**Accountability:** We hold ourselves responsible for our actions and welcome every opportunity to educate stakeholders about our policies, decisions, and aspirations.

**Efficiency:** We accomplish our work using resources in the most effective manner.

**Collaboration:** We develop partnerships that result in student success and a highly qualified, globally competent workforce.

**Excellence:** We strive for excellence in all our endeavors.

The Texas Higher Education Coordinating Board does not discriminate on the basis of race, color, national origin, gender, religion, age or disability in employment or the provision of services.

Please cite this report as follows: Texas Higher Education Coordinating Board. (2016). Enrollment Forecast 2017-2030. Austin, TX.

## **Enrollment Forecast 2017-2030 for Texas Colleges and Universities**

Biennially since 1979, the Texas Higher Education Coordinating Board (THECB) has calculated enrollment trends and expectations, which are fundamental to higher education planning. In times of changing demographics, such as those Texas is experiencing, these forecasts become even more critical as they inform the higher education community about anticipated enrollment if current enrollment patterns continue. The Enrollment Forecast 2017-2030 is the 20th installment in the THECB's series on this important topic.

### **Enrollment Forecast Process**

The methodology used to produce the enrollment forecast has remained relatively unchanged since 1979. For public colleges and universities, it uses five years of past enrollment from Texas counties, differentiated by age and race/ethnicity, and applies these enrollment rates to population projections prepared by the Texas Demographic Center (formerly the Texas State Data Center). Forecasts for independent colleges and universities are derived using simple linear regression, also based on five years of past data. The methodology for both public and independent institutions does not consider possible future changes that could affect enrollments, such as improvements in high school graduation rates, increases in higher education enrollment by racial/ethnic groups, or changes in local policies. For that reason, the forecast is conservative; it projects future enrollments if current trends continue.

The five years used to determine this forecast are fall 2011 through fall 2015. The growth rate at public and independent colleges and universities from fall 2011 through fall 2013 was -1.2 percent; this came after a period of very strong growth (7.5% from fall 2009 to fall 2011). From 2013 through 2015, modest growth was observed at 2.4 percent. The effect of this modest increase in enrollment is moderated by the negative growth rate from 2011 to 2013 and is complicated by demographic changes.

The enrollment forecast concludes that, if current patterns persist, Texas public and independent two-year and four-year institutions will grow from the 1.495 million enrollees in fall 2016 to 1.513 million in 2017 (or 90,000 more students more than in 2010 and 297,000 more since 2005). To begin the process of planning and preparing for the years beyond 2017, this report also estimates enrollments through 2030, which are predicted to be 1.7 million (see Tables 1 and 2.)

The projections in this report are fairly similar to comparable years from the January 2015 Enrollment Forecast. The 1.57 million enrollments projected for 2020 are about 3,000 higher than projected in 2015 for that year, and the 1.641 million students for 2025 are about 3,000 fewer than the earlier 1.644 million estimate.

For public universities, preliminary fall 2016 enrollments totaled 637,000 students, or about 80,000 more students than in fall 2010. Enrollments at universities are projected to grow to 670,000 in 2020 (an 8.3% increase from 2015), to 705,000 in 2025 (a 5.2% increase from 2020), and to 732,000 by 2030 (a 3.7% increase from 2025).

Texas public two-year colleges generally have grown more rapidly than universities since the mid-1960s and are expected to continue to have more students than universities, despite the declines experienced from 2011 to 2014. Public colleges' enrollment for fall 2016 totaled 732,000 students, a decrease of about 11,000 since 2010, but an increase of about 152,000 students (27%) over fall 2005 enrollment. This enrollment forecast estimates a 7.2 percent

enrollment increase at public colleges from 2015 to 2020, a fairly modest increase moderated by the declines in 2011 to 2014. Texas public two-year colleges are expected to enroll about 770,000 students in 2020; 808,000 in 2025; and 837,000 in 2030, or about 105,000 more than projected for public universities in that year.

About 125,000 students enrolled in Texas' independent colleges and universities in fall 2016. Independent college enrollments are forecast to grow very modestly to 126,000 in 2020, 127,000 in 2025, and 128,000 in 2030.

No enrollment projections are made for health-related institutions because their enrollments are more closely tied to state policies than to state population changes, nor are projections made for career colleges because many lack a regional presence due to online offerings. Although not included in the forecast, Texas enrollments at these two institution types are available in the higher education accountability system.

### **Important Considerations**

The following points should be remembered when reviewing this forecast: The Texas Demographic Center (TDC) periodically updates its population projections and reconsiders the migration scenarios that should be used for long-term projections. This enrollment forecast uses the TDC's 2015 population projections and, on the recommendation of the data center, the 0.5 migration scenario, which assumes rates of net migration that are one-half of those from 2000 to 2010.

The total population projected for 2017 used in the current enrollment forecast is 27,686,234, which is very close to the projection used for the 2015 forecast (0.3 percent lower). For the college-going 15-34 age group, the projected population is also very close at just 0.1 percent larger than prior projections. Because the population forecast is an integral part of the projection methodology, projected population has a direct effect on anticipated enrollments. The variations in the population projections used for the 2017 forecast versus the 2015 forecast were much slighter than the differences in projections observed between the 2013 and 2015 forecasts, resulting in predictions that were fairly similar to the 2015 forecast, particularly for the near future.

The other primary factor influencing projected enrollment is recent enrollment trends. As mentioned previously, fall enrollment at public and independent colleges and universities grew by 7.5 percent from 2009 to 2011, followed by a decline of 1.2 percent from 2011 to 2013, and an increase of 2.4 percent from 2013 to 2015. The decline from 2011 to 2014 at public two-year colleges has been tempered by the increases seen since 2014 and the conservative nature of the forecast methodology. Enrollment trends by region also influence the projection. Between 2016 and 2030, public university and two-year college enrollments in the four fastest growing higher education regions of the state – the Metroplex, Central Texas, Gulf Coast, and South Texas – are projected to account for almost 90 percent of the growth statewide, or about 176,000 enrollments out of a projected overall increase of about 199,000.

The forecast model is influenced strongly by historical in-state enrollment patterns at each institution and projected population changes by county. This forecast should not accurately reflect future enrollment if institutions recruit students from different geographic areas or ethnic groups. Institutional decisions to change or impose enrollment limitations would also reduce the forecast's accuracy.

Economics affect enrollment. Two-year college enrollment has usually expanded in times of increasing unemployment, in part because students want to update their skills to prepare for

better jobs or jobs in different fields. During the great recession, enrollments surged at two-year colleges, as seen from 2008 to 2010. The pattern of decreased enrollments at two-year schools from 2011 to 2014 were similar to what has happened many times before; when the economy comes back, many students, especially at the two-year level, bypass higher education for the workforce. Current projections predict modest, steady increases in enrollment, but unexpected economic changes may alter these predictions, as might a range of other variables.

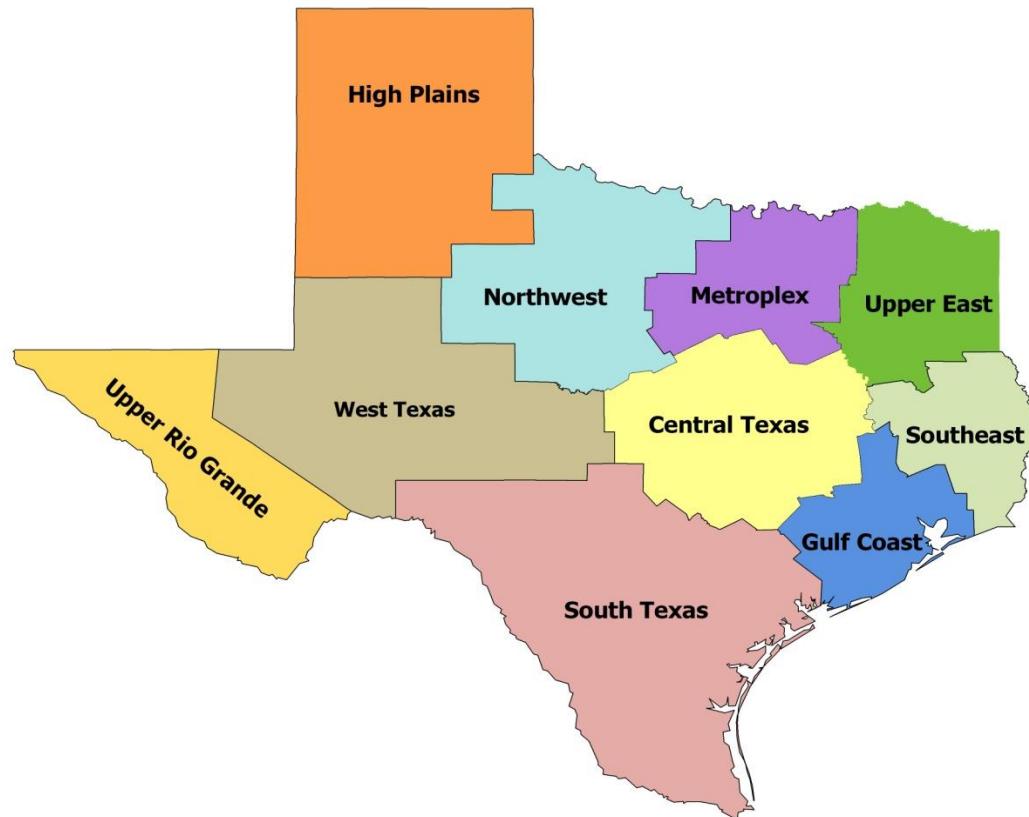
**Table 1.** Fall headcount enrollment forecasts, Texas institutions of higher education.

	<b>Actual 2010</b>	<b>Actual 2015</b>	<b>Act. Prelim. 2016</b>	<b>Total Projections</b>					
				<b>2017</b>	<b>2018</b>	<b>2019</b>	<b>2020</b>	<b>2025</b>	<b>2030</b>
Public Universities	557,550	619,175	637,275	644,456	653,265	661,435	670,481	705,448	731,798
Public Two-Year Colleges	743,252	718,547	732,472	742,743	751,890	761,332	770,178	807,954	836,524
Independent Universities	122,894	125,440	125,457	125,654	125,895	126,119	126,366	127,323	128,044
Total	1,423,696	1,463,162	1,495,204	1,512,853	1,531,051	1,548,876	1,567,025	1,640,724	1,696,366

**Table 2.** Forecasted changes in fall headcount enrollment.

	<b>2010-2015</b>		<b>2015-2020</b>		<b>2020-2025</b>		<b>2025-2030</b>	
	<b>Number</b>	<b>Percent</b>	<b>Number</b>	<b>Percent</b>	<b>Number</b>	<b>Percent</b>	<b>Number</b>	<b>Percent</b>
Public Universities	61,625	11.1%	51,306	8.3%	34,967	5.2%	26,351	3.7%
Public Two-Year Colleges	-24,705	-3.3%	51,631	7.2%	37,776	4.9%	28,570	3.5%
Independent Senior Colleges and Universities	2,546	2.1%	926	0.7%	957	0.8%	721	0.6%
Total	39,466	2.8%	103,863	7.1%	73,699	4.7%	55,642	3.4%

**Figure 1.** Texas Higher Education Coordinating Board's 10 regions.



**Table 3.** Participation projections by region, Texas public institutions of higher education.

<b>Institution Name</b>	<b>Actual 2010</b>	<b>Actual 2015</b>	<b>Prelim. 2016</b>	<b>2017</b>	<b>2018</b>	<b>2019</b>	<b>2020</b>	<b>2025</b>	<b>2030</b>
<b>Central Texas Region</b>									
Texas A&M University	49,129	58,515	60,507	61,112	61,418	61,725	62,033	63,584	65,174
Texas A&M University-Central Texas	2,317	2,466	2,616	2,652	2,694	2,734	2,774	2,975	3,201
Texas State University	32,572	37,979	38,808	39,000	39,500	40,000	40,506	43,136	45,936
The University of Texas at Austin	51,195	50,950	51,334	52,259	52,854	53,529	54,320	57,767	59,564
University Subtotal	135,213	149,910	153,265	155,023	156,466	157,988	159,634	167,461	173,875
Austin Community College	41,582	38,909	39,199	40,212	40,946	41,690	42,423	45,572	48,401
Blinn College	17,755	19,157	18,914	18,979	19,072	19,172	19,247	19,603	20,734
Central Texas College	12,737	9,539	9,931	10,068	10,195	10,318	10,450	11,332	11,949
Hill College	4,429	3,977	4,073	4,105	4,130	4,167	4,200	4,264	4,329
McLennan Community College	9,912	8,300	8,764	8,779	8,811	8,838	8,851	9,077	9,373
Temple College	5,966	5,048	4,932	4,992	5,063	5,152	5,232	5,728	6,121
Texas State Technical College-Waco	4,976	3,790	4,007	4,089	4,212	4,236	4,257	4,367	4,447
Two-Year Colleges Subtotal	97,357	88,720	89,820	91,224	92,429	93,574	94,660	99,943	105,352
Central Texas Regional Totals	232,570	238,630	243,085	246,247	248,894	251,561	254,293	267,404	279,227
<b>Gulf Coast Region</b>									
Prairie View A&M University	8,781	8,268	9,009	9,041	9,055	9,093	9,139	9,357	9,472
Sam Houston State University	17,236	20,031	20,477	20,663	20,747	20,869	21,033	21,715	22,192
Texas A&M University at Galveston	1,867	2,324	2,204	2,215	2,226	2,237	2,248	2,305	2,362
Texas Southern University	9,557	8,965	8,862	9,005	9,049	9,103	9,161	9,442	9,657
University of Houston	38,752	42,704	43,774	44,327	44,879	45,504	46,279	50,088	52,341
University of Houston-Clear Lake	8,099	8,906	8,674	8,862	8,938	9,028	9,129	9,650	10,201
University of Houston-Downtown	12,900	14,255	14,242	14,585	14,773	14,972	15,193	16,277	17,173
University Subtotal	97,192	105,453	107,242	108,699	109,666	110,808	112,182	118,835	123,398
Alvin Community College	5,721	5,116	5,668	5,775	5,867	5,970	6,049	6,522	6,758
Brazosport College	4,174	4,221	4,320	4,389	4,463	4,545	4,605	5,003	5,254
College of the Mainland Community Col. District	4,352	4,013	4,000	4,049	4,067	4,091	4,099	4,160	4,268
Galveston College	2,318	2,071	2,201	2,206	2,228	2,252	2,271	2,363	2,428
Houston Community College System	49,717	46,342	47,263	47,473	48,100	48,794	49,487	52,974	55,169



<b>Institution Name</b>	<b>Actual 2010</b>	<b>Actual 2015</b>	<b>Prelim. 2016</b>	<b>2017</b>	<b>2018</b>	<b>2019</b>	<b>2020</b>	<b>2025</b>	<b>2030</b>
Lee College	6,719	6,202	7,202	7,257	7,308	7,371	7,416	7,702	7,886
Lone Star College System-Cy-Fair	16,861	18,857	20,096	20,219	20,392	20,602	20,813	22,020	22,821
Lone Star College System-Kingwood	9,807	11,477	11,385	11,396	11,486	11,590	11,688	12,220	12,567
Lone Star College System-Montgomery	11,154	12,192	12,721	12,967	13,206	13,449	13,680	14,661	15,198
Lone Star College System-North Harris	15,213	14,985	14,851	14,998	15,157	15,338	15,527	16,521	17,198
Lone Star College System-Tomball	10,791	7,221	7,248	7,294	7,341	7,396	7,445	7,721	7,956
Lone Star College System-University Park	N/A	9,428	10,832	10,885	10,956	11,047	11,139	11,716	12,145
San Jacinto College-Central Campus	15,035	13,591	13,762	13,929	14,048	14,194	14,351	15,184	15,806
San Jacinto College-North Campus	6,573	7,985	8,181	8,219	8,315	8,426	8,540	9,117	9,477
San Jacinto College-South Campus	10,497	10,770	11,228	11,264	11,377	11,517	11,660	12,449	12,986
Texas State Technical College-Fort Bend	0	0	249	438	504	554	582	593	605
Wharton County Junior College	6,922	7,416	7,072	7,082	7,228	7,390	7,535	8,023	8,002
Two-Year Colleges Subtotal	175,854	181,887	188,279	189,838	192,041	194,527	196,887	208,950	216,522
Gulf Coast Regional Totals	273,046	287,340	295,521	298,537	301,707	305,335	309,069	327,784	339,920
<b>High Plains Region</b>									
Texas Tech University	31,587	35,546	36,225	36,354	36,543	36,830	37,154	38,472	39,838
West Texas A&M University	7,839	9,482	9,902	9,959	10,013	10,085	10,168	10,538	10,780
University Subtotal	39,426	45,028	46,127	46,313	46,556	46,915	47,322	49,010	50,619
Amarillo College	11,540	9,576	9,529	9,727	9,831	9,962	10,094	10,700	11,010
Clarendon College	1,583	1,343	1,483	1,490	1,476	1,485	1,494	1,534	1,509
Frank Phillips College	1,208	1,427	1,525	1,545	1,565	1,576	1,590	1,617	1,544
South Plains College	10,153	9,365	9,459	9,473	9,528	9,594	9,659	10,015	10,397
Two-Year Colleges Subtotal	24,484	21,711	21,996	22,235	22,400	22,617	22,838	23,866	24,460
High Plains Regional Totals	63,910	66,739	68,123	68,548	68,956	69,532	70,159	72,876	75,079
<b>Metroplex Region</b>									
Tarleton State University	9,340	12,333	13,063	13,217	13,284	13,367	13,466	13,767	13,949
Texas A&M University-Commerce	10,280	12,302	12,385	12,561	12,726	12,901	13,077	13,842	14,335
Texas Woman's University	14,008	15,146	15,518	15,615	15,861	16,128	16,406	17,662	18,575
The University of Texas at Arlington	32,975	37,008	39,714	40,276	40,840	41,446	42,084	45,268	47,421
The University of Texas at Dallas	17,128	24,554	26,791	26,997	27,626	28,328	29,077	32,561	34,110
University of North Texas	36,067	37,175	37,934	38,152	38,685	39,278	39,947	42,680	43,887
University of North Texas-Dallas	2,084	2,488	3,026	3,091	3,133	3,179	3,228	3,473	3,684
University Subtotal	121,882	141,006	148,431	149,909	152,155	154,626	157,284	169,255	175,962

<b>Institution Name</b>	<b>Actual 2010</b>	<b>Actual 2015</b>	<b>Prelim. 2016</b>	<b>2017</b>	<b>2018</b>	<b>2019</b>	<b>2020</b>	<b>2025</b>	<b>2030</b>
Collin County Community College District	26,501	27,656	29,158	29,765	30,689	31,637	32,532	35,507	36,198
Dallas County Community College District (DCCCD)-Brookhaven College	10,847	10,367	10,012	10,100	10,211	10,345	10,492	11,333	11,998
DCCCD-Cedar Valley College	5,924	5,955	6,069	6,089	6,122	6,165	6,205	6,466	6,729
DCCCD-Eastfield College	10,852	12,319	12,682	12,794	12,909	13,055	13,206	14,083	14,761
DCCCD-El Centro College	9,823	9,452	9,528	9,734	9,827	9,939	10,054	10,685	11,154
DCCCD-Mountain View College	7,975	8,739	8,957	9,081	9,189	9,316	9,447	10,169	10,685
DCCCD-North Lake College	10,904	8,946	8,322	8,785	8,857	8,951	9,053	9,716	10,314
DCCCD-Richland College	16,858	16,226	15,874	16,186	16,290	16,442	16,606	17,743	18,702
Grayson County College	5,034	4,453	4,549	4,662	4,674	4,697	4,731	4,845	4,798
Navarro College	9,982	9,420	9,209	9,336	9,400	9,422	9,429	9,516	9,619
North Central Texas Community College District	9,402	9,533	9,438	9,733	9,938	10,139	10,339	10,988	11,273
Tarrant County College District (TCCD)-Connect	0	13,459	9,034	9,129	9,219	9,320	9,402	9,717	9,899
TCCD-Northeast Campus	15,899	11,440	11,950	12,052	12,187	12,329	12,472	13,039	13,292
TCCD-Northwest Campus	12,032	7,690	8,550	8,735	8,860	8,993	9,121	9,640	9,808
TCCD-South Campus	11,690	7,350	7,721	7,925	8,062	8,207	8,349	8,935	9,141
TCCD-Southeast Campus	13,911	10,469	12,031	12,463	12,652	12,853	13,048	13,867	14,139
TCCD-Trinity River Campus	4,519	6,698	6,926	7,141	7,268	7,403	7,533	8,056	8,208
Texas State Technical College-North Texas	0	0	275	597	746	858	901	946	965
Weatherford College	5,651	5,482	5,607	5,616	5,678	5,722	5,770	5,969	6,001
Two-Year Colleges Subtotal	187,804	185,654	185,892	189,923	192,779	195,793	198,689	211,221	217,683
<b>Metroplex Regional Totals</b>	<b>309,686</b>	<b>326,660</b>	<b>334,323</b>	<b>339,832</b>	<b>344,934</b>	<b>350,419</b>	<b>355,973</b>	<b>380,476</b>	<b>393,645</b>
<b>Northwest Region</b>									
Midwestern State University	6,133	5,734	5,682	5,743	5,779	5,816	5,855	6,003	6,089
University Subtotal	6,133	5,734	5,682	5,743	5,779	5,816	5,855	6,003	6,089
Cisco College	4,745	3,293	3,251	3,255	3,280	3,334	3,410	3,936	3,455
Ranger College	1,588	2,052	2,257	2,326	2,396	2,467	2,541	2,645	2,752
Texas State Technical College-West Texas	1,320	1,211	1,519	1,562	1,563	1,567	1,565	1,579	1,585
Vernon College	3,167	2,891	2,972	2,974	2,980	2,987	2,993	3,044	3,080
Western Texas College	2,307	2,127	2,183	2,187	2,185	2,192	2,197	2,258	2,249
Two-Year Colleges Subtotal	13,127	11,574	12,182	12,303	12,403	12,546	12,706	13,463	13,120
<b>Northwest Regional Totals</b>	<b>19,260</b>	<b>17,308</b>	<b>17,864</b>	<b>18,046</b>	<b>18,182</b>	<b>18,362</b>	<b>18,561</b>	<b>19,466</b>	<b>19,209</b>

<b>Institution Name</b>	<b>Actual 2010</b>	<b>Actual 2015</b>	<b>Prelim. 2016</b>	<b>2017</b>	<b>2018</b>	<b>2019</b>	<b>2020</b>	<b>2025</b>	<b>2030</b>
<b>South Texas Region</b>									
Sul Ross State University-Rio Grande College	1,092	1,019	1,014	1,061	1,081	1,104	1,125	1,194	1,223
Texas A&M International University	6,853	7,192	7,421	7,469	7,595	7,725	7,848	8,220	8,556
Texas A&M University-Corpus Christi	10,033	11,661	12,203	12,630	12,883	13,140	13,403	14,798	16,338
Texas A&M University-Kingsville	6,586	9,207	9,290	9,360	9,432	9,525	9,620	9,834	10,239
Texas A&M University-San Antonio	3,120	4,564	5,509	5,553	5,633	5,718	5,799	6,162	6,456
The University of Texas at San Antonio	30,258	28,787	28,962	29,252	31,132	31,492	31,869	33,270	34,216
The University of Texas-Rio Grande Valley	25,599	28,584	27,496	27,994	28,830	29,850	31,146	31,416	32,467
University of Houston-Victoria	4,095	4,152	4,144	4,353	4,429	4,510	4,590	4,938	5,277
University Subtotal	87,636	95,166	96,039	97,672	101,016	103,063	105,400	109,834	114,771
Alamo Community College District (ACCD) -Northeast Lakeview College	1,312	3,332		3,364	3,390	3,429	3,458	3,485	3,705
ACCD-Northwest Vista College	15,921	16,656	16,705	16,919	17,119	17,293	17,441	17,970	18,678
ACCD-Palo Alto College	8,965	8,671	9,108	9,117	9,231	9,336	9,429	9,732	9,958
ACCD-San Antonio College	25,269	20,638	18,674	18,851	19,085	19,296	19,486	20,205	20,974
ACCD-St. Philip's College	10,828	11,198	11,616	11,740	11,876	12,003	12,107	12,477	12,877
Coastal Bend College	4,348	4,436	5,044	5,074	5,075	5,111	5,108	5,201	5,385
Del Mar College	12,236	10,852	11,673	11,906	12,145	12,387	12,635	12,888	13,145
Laredo Community College	9,994	8,690	9,108	9,328	9,492	9,647	9,788	10,073	10,657
South Texas College	27,971	33,994	33,055	33,331	33,974	34,471	34,883	35,414	37,254
Southwest Texas Junior College	6,235	5,608	6,439	6,474	6,491	6,516	6,552	6,575	6,932
Texas Southmost College	11,043	4,029	5,047	5,174	5,251	5,324	5,390	5,526	5,906
Texas State Technical College-Harlingen Campus	5,779	4,789	5,765	5,958	6,044	6,132	6,209	6,359	6,772
Victoria College	4,290	4,017	4,019	4,048	4,070	4,100	4,131	4,224	4,321
Two-Year Colleges Subtotal	144,191	136,910	139,617	141,310	143,282	145,073	146,645	150,224	156,563
South Texas Regional Totals	231,827	232,076	235,656	238,982	244,298	248,136	252,044	260,058	271,334
<b>Southeast Texas Region</b>									
Lamar University	13,969	14,494	14,399	14,486	14,558	14,648	14,746	15,249	15,697
Stephen F. Austin State University	12,829	12,484	12,653	12,674	12,714	12,777	12,859	13,105	13,301
University Subtotal	26,798	26,978	27,052	27,160	27,271	27,424	27,605	28,355	28,998

<b>Institution Name</b>	<b>Actual 2010</b>	<b>Actual 2015</b>	<b>Prelim. 2016</b>	<b>2017</b>	<b>2018</b>	<b>2019</b>	<b>2020</b>	<b>2025</b>	<b>2030</b>
Angelina College	5,904	5,145	5,333	5,371	5,374	5,379	5,395	5,521	5,648
Lamar Institute of Technology	3,243	2,846	2,709	2,711	2,716	2,720	2,731	2,802	2,852
Lamar State College-Orange	2,649	2,318	2,338	2,340	2,343	2,347	2,348	2,376	2,372
Lamar State College-Port Arthur	2,374	1,802	2,086	2,091	2,101	2,108	2,122	2,224	2,305
Two-Year Colleges Subtotal	14,170	12,111	12,466	12,512	12,534	12,554	12,596	12,924	13,178
Southeast Texas Regional Totals	40,968	39,089	39,518	39,672	39,805	39,978	40,201	41,278	42,176
<b>Upper East Texas Region</b>									
Texas A&M University-Texarkana	1,803	1,839	2,040	2,048	2,058	2,069	2,080	2,126	2,149
The University of Texas at Tyler	6,446	8,500	9,416	9,534	9,615	9,707	9,802	10,226	10,502
University Subtotal	8,249	10,339	11,456	11,583	11,673	11,776	11,882	12,352	12,651
Kilgore College	6,661	5,640	5,595	5,677	5,712	5,743	5,784	6,026	6,139
Northeast Texas Community College	3,226	2,704	3,088	3,113	3,122	3,156	3,185	3,337	3,321
Panola College	2,322	2,664	2,667	2,733	2,746	2,767	2,790	2,820	2,806
Paris Junior College	6,197	5,000	4,817	4,831	4,863	4,878	4,881	4,944	5,019
Texarkana College	4,003	4,144	4,221	4,483	4,498	4,492	4,489	4,439	4,417
Trinity Valley Community College	7,594	6,694	6,956	7,035	7,114	7,174	7,233	7,468	7,550
Texas State Technical College-Marshall Campus	949	899	777	807	810	863	866	885	885
Tyler Junior College	11,736	9,287	9,519	9,526	9,584	9,651	9,688	9,905	10,021
Two-Year Colleges Subtotal	42,688	37,032	37,640	38,205	38,448	38,724	38,916	39,823	40,157
Upper East Texas Regional Totals	50,937	47,371	49,096	49,788	50,121	50,500	50,798	52,175	52,808
<b>Upper Rio Grande Region</b>									
Sul Ross State University	2,047	1,973	2,077	2,098	2,119	2,137	2,153	2,205	2,285
The University of Texas at El Paso	22,051	23,308	23,888	23,910	24,146	24,366	24,528	24,960	25,519
University Subtotal	24,098	25,281	25,965	26,008	26,265	26,504	26,681	27,165	27,804
El Paso Community College District	27,337	27,782	28,686	29,101	29,349	29,529	29,679	30,021	31,328
Two-Year Colleges Subtotal	27,337	27,782	28,686	29,101	29,349	29,529	29,679	30,021	31,328
Upper Rio Grande Regional Totals	51,435	53,063	54,651	55,109	55,614	56,033	56,360	57,187	59,132
<b>West Texas Region</b>									
Angelo State University	6,860	8,343	9,475	9,491	9,508	9,540	9,583	9,806	10,025
The University of Texas of the Permian Basin	4,063	5,937	6,541	6,856	6,911	6,975	7,054	7,374	7,608
University Subtotal	10,923	14,280	16,016	16,347	16,419	16,515	16,637	17,179	17,633

<b>Institution Name</b>	<b>Actual 2010</b>	<b>Actual 2015</b>	<b>Prelim. 2016</b>	<b>2017</b>	<b>2018</b>	<b>2019</b>	<b>2020</b>	<b>2025</b>	<b>2030</b>
Howard College	4,582	4,065	4,431	4,491	4,510	4,524	4,556	4,722	4,759
Midland College	6,344	5,413	5,703	5,732	5,767	5,817	5,874	6,254	6,529
Odessa College	5,211	5,552	5,654	5,754	5,836	5,932	6,019	6,421	6,749
Southwest Collegiate Institute for the Deaf	103	136	106	113	113	114	115	121	123
Two-Year Colleges Subtotal	16,240	15,166	15,894	16,090	16,226	16,386	16,564	17,518	18,159
West Texas Regional Totals	27,163	29,446	31,910	32,437	32,645	32,901	33,201	34,697	35,792
<b>Public Total</b>	1,300,802	1,337,722	1,369,747	1,387,199	1,405,156	1,422,757	1,440,659	1,513,401	1,568,322

\* The University of Texas at Brownsville and The University of Texas-Pan American were combined into The University of Texas-Rio Grande Valley.

**Table 4.** Fall headcount participation forecasts - Texas public universities.

	<b>Actual</b>	<b>Actual</b>	<b>Prelim.</b>	<b>Total Projections</b>					
	<b>2010</b>	<b>2015</b>	<b>2016</b>	<b>2017</b>	<b>2018</b>	<b>2019</b>	<b>2020</b>	<b>2025</b>	<b>2030</b>
Angelo State University	6,860	8,343	9,475	9,491	9,508	9,540	9,583	9,806	10,025
Lamar University	13,969	14,494	14,399	14,486	14,558	14,648	14,746	15,249	15,697
Midwestern State University	6,133	5,734	5,682	5,743	5,779	5,816	5,855	6,003	6,089
Prairie View A&M University	8,781	8,268	9,009	9,041	9,055	9,093	9,139	9,357	9,472
Sam Houston State University	17,236	20,031	20,477	20,663	20,747	20,869	21,033	21,715	22,192
Stephen F. Austin State University	12,829	12,484	12,653	12,674	12,714	12,777	12,859	13,105	13,301
Sul Ross State University	2,047	1,973	2,077	2,098	2,119	2,137	2,153	2,205	2,285
Sul Ross State University-Rio Grande College	1,092	1,019	1,014	1,061	1,081	1,104	1,125	1,194	1,223
Tarleton State University	9,340	12,333	13,063	13,217	13,284	13,367	13,466	13,767	13,949
Texas A&M International University	6,853	7,192	7,421	7,469	7,595	7,725	7,848	8,220	8,556
Texas A&M University	49,129	58,515	60,507	61,112	61,418	61,725	62,033	63,584	65,174
Texas A&M University at Galveston	1,867	2,324	2,204	2,215	2,226	2,237	2,248	2,305	2,362
Texas A&M University-Central Texas	2,317	2,466	2,616	2,652	2,694	2,734	2,774	2,975	3,201
Texas A&M University-Commerce	10,280	12,302	12,385	12,561	12,726	12,901	13,077	13,842	14,335
Texas A&M University-Corpus Christi	10,033	11,661	12,203	12,630	12,883	13,140	13,403	14,798	16,338
Texas A&M University-Kingsville	6,586	9,207	9,290	9,360	9,432	9,525	9,620	9,834	10,239
Texas A&M University-San Antonio	3,120	4,564	5,509	5,553	5,633	5,718	5,799	6,162	6,456
Texas A&M University-Texarkana	1,803	1,839	2,040	2,048	2,058	2,069	2,080	2,126	2,149
Texas Southern University	9,557	8,965	8,862	9,005	9,049	9,103	9,161	9,442	9,657
Texas State University	32,572	37,979	38,808	39,000	39,500	40,000	40,506	43,136	45,936
Texas Tech University	31,587	35,546	36,225	36,354	36,543	36,830	37,154	38,472	39,838
Texas Woman's University	14,008	15,146	15,518	15,615	15,861	16,128	16,406	17,662	18,575
The University of Texas at Arlington	32,975	37,008	39,714	40,276	40,840	41,446	42,084	45,268	47,421
The University of Texas at Austin	51,195	50,950	51,334	52,259	52,854	53,529	54,320	57,767	59,564
The University of Texas at Dallas	17,128	24,554	26,791	26,997	27,626	28,328	29,077	32,561	34,110
The University of Texas at El Paso	22,051	23,308	23,888	23,910	24,146	24,366	24,528	24,960	25,519
The University of Texas at San Antonio	30,258	28,787	28,962	29,252	31,132	31,492	31,869	33,270	34,216
The University of Texas at Tyler	6,446	8,500	9,416	9,534	9,615	9,707	9,802	10,226	10,502
The University of Texas of the Permian Basin	4,063	5,937	6,541	6,856	6,911	6,975	7,054	7,374	7,608
The University of Texas-Rio Grande Valley	25,599	28,584	27,496	27,994	28,830	29,850	31,146	31,416	32,467
University of Houston	38,752	42,704	43,774	44,327	44,879	45,504	46,279	50,088	52,341

	<b>Actual</b>	<b>Actual</b>	<b>Prelim</b>	<b>Total Projections</b>					
	<b>2010</b>	<b>2015</b>	<b>2016</b>	<b>2017</b>	<b>2018</b>	<b>2019</b>	<b>2020</b>	<b>2025</b>	<b>2030</b>
University of Houston-Clear Lake	8,099	8,906	8,674	8,862	8,938	9,028	9,129	9,650	10,201
University of Houston-Downtown	12,900	14,255	14,242	14,585	14,773	14,972	15,193	16,277	17,173
University of Houston-Victoria	4,095	4,152	4,144	4,353	4,429	4,510	4,590	4,938	5,277
University of North Texas	36,067	37,175	37,934	38,152	38,685	39,278	39,947	42,680	43,887
University of North Texas-Dallas	2,084	2,488	3,026	3,091	3,133	3,179	3,228	3,473	3,684
West Texas A&M University	7,839	9,482	9,902	9,959	10,013	10,085	10,168	10,538	10,780
<b>University Statewide Totals</b>	<b>557,550</b>	<b>619,175</b>	<b>637,275</b>	<b>644,456</b>	<b>653,265</b>	<b>661,435</b>	<b>670,481</b>	<b>705,448</b>	<b>731,798</b>

\* The University of Texas at Brownsville and The University of Texas-Pan American were combined into The University of Texas-Rio Grande Valley.

**Table 5.** Forecasted changes in fall headcount participation - Texas public universities.

	2010-2015		2015-2020		2020-2025		2025-2030	
	Number	Percent	Number	Percent	Number	Percent	Number	Percent
Angelo State University	1,483	21.6%	1,240	14.9%	222	2.3%	219	2.2%
Lamar University	525	3.8%	252	1.7%	503	3.4%	448	2.9%
Midwestern State University	-399	-6.5%	121	2.1%	148	2.5%	86	1.4%
Prairie View A&M University	-513	-5.8%	871	10.5%	218	2.4%	115	1.2%
Sam Houston State University	2,795	16.2%	1,002	5.0%	682	3.2%	476	2.2%
Stephen F. Austin State University	-345	-2.7%	375	3.0%	246	1.9%	196	1.5%
Sul Ross State University	-74	-3.6%	180	9.1%	52	2.4%	80	3.6%
Sul Ross State University-Rio Grande College	-73	-6.7%	106	10.5%	69	6.1%	28	2.4%
Tarleton State University	2,993	32.0%	1,133	9.2%	301	2.2%	182	1.3%
Texas A&M International University	339	4.9%	656	9.1%	372	4.7%	336	4.1%
Texas A&M University	9,386	19.1%	3,518	6.0%	1,551	2.5%	1,590	2.5%
Texas A&M University at Galveston	457	24.5%	-76	-3.3%	57	2.6%	57	2.5%
Texas A&M University-Central Texas	149	6.4%	308	12.5%	201	7.2%	226	7.6%
Texas A&M University-Commerce	2,022	19.7%	775	6.3%	766	5.9%	493	3.6%
Texas A&M University-Corpus Christi	1,628	16.2%	1,742	14.9%	1,395	10.4%	1,539	10.4%
Texas A&M University-Kingsville	2,621	39.8%	413	4.5%	214	2.2%	404	4.1%
Texas A&M University-San Antonio	1,444	46.3%	1,235	27.1%	363	6.3%	295	4.8%
Texas A&M University-Texarkana	36	2.0%	241	13.1%	46	2.2%	23	1.1%
Texas Southern University	-592	-6.2%	196	2.2%	281	3.1%	215	2.3%
Texas State University	5,407	16.6%	2,527	6.7%	2,629	6.5%	2,800	6.5%
Texas Tech University	3,959	12.5%	1,608	4.5%	1,318	3.5%	1,366	3.6%
Texas Woman's University	1,138	8.1%	1,260	8.3%	1,257	7.7%	913	5.2%
The University of Texas at Arlington	4,033	12.2%	5,076	13.7%	3,184	7.6%	2,153	4.8%
The University of Texas at Austin	-245	-0.5%	3,370	6.6%	3,446	6.3%	1,798	3.1%
The University of Texas at Dallas	7,426	43.4%	4,523	18.4%	3,484	12.0%	1,549	4.8%
The University of Texas at El Paso	1,257	5.7%	1,220	5.2%	433	1.8%	559	2.2%
The University of Texas at San Antonio	-1,471	-4.9%	3,082	10.7%	1,402	4.4%	945	2.8%
The University of Texas at Tyler	2,054	31.9%	1,302	15.3%	424	4.3%	276	2.7%
The University of Texas of the Permian Basin	1,874	46.1%	1,117	18.8%	320	4.5%	234	3.2%
The University of Texas-Rio Grande Valley	2,985	11.7%	2,562	9.0%	270	0.9%	1,050	3.3%
University of Houston	3,952	10.2%	3,575	8.4%	3,808	8.2%	2,253	4.5%



	2010-2015		2015-2020		2020-2025		2025-2030	
	Number	Percent	Number	Percent	Number	Percent	Number	Percent
University of Houston-Clear Lake	807	10.0%	223	2.5%	522	5.7%	550	5.7%
University of Houston-Downtown	1,355	10.5%	938	6.6%	1,084	7.1%	896	5.5%
University of Houston-Victoria	57	1.4%	438	10.5%	349	7.6%	339	6.9%
University of North Texas	1,108	3.1%	2,772	7.5%	2,734	6.8%	1,206	2.8%
University of North Texas-Dallas	404	19.4%	740	29.7%	246	7.6%	211	6.1%
West Texas A&M University	1,643	21.0%	686	7.2%	369	3.6%	243	2.3%
<b>University Statewide Totals</b>	<b>61,625</b>	<b>11.1%</b>	<b>51,306</b>	<b>8.3%</b>	<b>34,967</b>	<b>5.2%</b>	<b>26,351</b>	<b>3.7%</b>

\* The University of Texas at Brownsville and The University of Texas-Pan American were combined into The University of Texas-Rio Grande Valley.

**Table 6.** Fall headcount participation forecasts - public two-year colleges.

	<b>Actual</b>	<b>Actual</b>	<b>Prelim.</b>	<b>Total Projections</b>					
	<b>2010</b>	<b>2015</b>	<b>2016</b>	<b>2017</b>	<b>2018</b>	<b>2019</b>	<b>2020</b>	<b>2025</b>	<b>2030</b>
ACCD-Northeast Lakeview College	1,312	3,332	3,364	3,390	3,429	3,458	3,485	3,579	3,705
ACCD-Northwest Vista College	15,921	16,656	16,705	16,919	17,119	17,293	17,441	17,970	18,678
ACCD-Palo Alto College	8,965	8,671	9,108	9,117	9,231	9,336	9,429	9,732	9,958
ACCD-San Antonio College	25,269	20,638	18,674	18,851	19,085	19,296	19,486	20,205	20,974
ACCD-St. Philip's College	10,828	11,198	11,616	11,740	11,876	12,003	12,107	12,477	12,877
Alvin Community College	5,721	5,116	5,668	5,775	5,867	5,970	6,049	6,522	6,758
Amarillo College	11,540	9,576	9,529	9,727	9,831	9,962	10,094	10,700	11,010
Angelina College	5,904	5,145	5,333	5,371	5,374	5,379	5,395	5,521	5,648
Austin Community College	41,582	38,909	39,199	40,212	40,946	41,690	42,423	45,572	48,401
Blinn College	17,755	19,157	18,914	18,979	19,072	19,172	19,247	19,603	20,734
Brazosport College	4,174	4,221	4,320	4,389	4,463	4,545	4,605	5,003	5,254
Central Texas College	12,737	9,539	9,931	10,068	10,195	10,318	10,450	11,332	11,949
Cisco College	4,745	3,293	3,251	3,255	3,280	3,334	3,410	3,936	3,455
Clarendon College	1,583	1,343	1,483	1,490	1,476	1,485	1,494	1,534	1,509
Coastal Bend College	4,348	4,436	5,044	5,074	5,075	5,111	5,108	5,201	5,385
College of the Mainland Community College District	4,352	4,013	4,000	4,049	4,067	4,091	4,099	4,160	4,268
Collin County Community College District	26,501	27,656	29,158	29,765	30,689	31,637	32,532	35,507	36,198
DCCCD-Brookhaven College	10,847	10,367	10,012	10,100	10,211	10,345	10,492	11,333	11,998
DCCCD-Cedar Valley College	5,924	5,955	6,069	6,089	6,122	6,165	6,205	6,466	6,729
DCCCD-Eastfield College	10,852	12,319	12,682	12,794	12,909	13,055	13,206	14,083	14,761
DCCCD-El Centro College	9,823	9,452	9,528	9,734	9,827	9,939	10,054	10,685	11,154
DCCCD-Mountain View College	7,975	8,739	8,957	9,081	9,189	9,316	9,447	10,169	10,685
DCCCD-North Lake College	10,904	8,946	8,322	8,785	8,857	8,951	9,053	9,716	10,314
DCCCD-Richland College	16,858	16,226	15,874	16,186	16,290	16,442	16,606	17,743	18,702
Del Mar College	12,236	10,852	11,673	11,906	12,145	12,387	12,635	12,888	13,145
El Paso Community College District	27,337	27,782	28,686	29,101	29,349	29,529	29,679	30,021	31,328
Frank Phillips College	1,208	1,427	1,525	1,545	1,565	1,576	1,590	1,617	1,544
Galveston College	2,318	2,071	2,201	2,206	2,228	2,252	2,271	2,363	2,428
Grayson County College	5,034	4,453	4,549	4,662	4,674	4,697	4,731	4,845	4,798
Hill College	4,429	3,977	4,073	4,105	4,130	4,167	4,200	4,264	4,329

	<b>Actual</b>	<b>Actual</b>	<b>Prelim.</b>	<b>Total Projections</b>					
	<b>2010</b>	<b>2015</b>	<b>2016</b>	<b>2017</b>	<b>2018</b>	<b>2019</b>	<b>2020</b>	<b>2025</b>	<b>2030</b>
Houston Community College System	49,717	46,342	47,263	47,473	48,100	48,794	49,487	52,974	55,169
Howard College	4,582	4,065	4,431	4,491	4,510	4,524	4,556	4,722	4,759
Kilgore College	6,661	5,640	5,595	5,677	5,712	5,743	5,784	6,026	6,139
Lamar Institute of Technology	3,243	2,846	2,709	2,711	2,716	2,720	2,731	2,802	2,852
Lamar State College-Orange	2,649	2,318	2,338	2,340	2,343	2,347	2,348	2,376	2,372
Lamar State College-Port Arthur	2,374	1,802	2,086	2,091	2,101	2,108	2,122	2,224	2,305
Laredo Community College	9,994	8,690	9,108	9,328	9,492	9,647	9,788	10,073	10,657
Lee College	6,719	6,202	7,202	7,257	7,308	7,371	7,416	7,702	7,886
Lone Star College System-Cy-Fair	16,861	18,857	20,096	20,219	20,392	20,602	20,813	22,020	22,821
Lone Star College System-Kingwood	9,807	11,477	11,385	11,396	11,486	11,590	11,688	12,220	12,567
Lone Star College System-Montgomery	11,154	12,192	12,721	12,967	13,206	13,449	13,680	14,661	15,198
Lone Star College System-North Harris	15,213	14,985	14,851	14,998	15,157	15,338	15,527	16,521	17,198
Lone Star College System-Tomball	10,791	7,221	7,248	7,294	7,341	7,396	7,445	7,721	7,956
Lone Star College System-University Park	0	9,428	10,832	10,885	10,956	11,047	11,139	11,716	12,145
McLennan Community College	9,912	8,300	8,764	8,779	8,811	8,838	8,851	9,077	9,373
Midland College	6,344	5,413	5,703	5,732	5,767	5,817	5,874	6,254	6,529
Navarro College	9,982	9,420	9,209	9,336	9,400	9,422	9,429	9,516	9,619
North Central Texas Community College District	9,402	9,533	9,438	9,733	9,938	10,139	10,339	10,988	11,273
Northeast Texas Community College	3,226	2,704	3,088	3,113	3,122	3,156	3,185	3,337	3,321
Odessa College	5,211	5,552	5,654	5,754	5,836	5,932	6,019	6,421	6,749
Panola College	2,322	2,664	2,667	2,733	2,746	2,767	2,790	2,820	2,806
Paris Junior College	6,197	5,000	4,817	4,831	4,863	4,878	4,881	4,944	5,019
Ranger College	1,588	2,052	2,257	2,326	2,396	2,467	2,541	2,645	2,752
San Jacinto College-Central Campus	15,035	13,591	13,762	13,929	14,048	14,194	14,351	15,184	15,806
San Jacinto College-North Campus	6,573	7,985	8,181	8,219	8,315	8,426	8,540	9,117	9,477
San Jacinto College-South Campus	10,497	10,770	11,228	11,264	11,377	11,517	11,660	12,449	12,986
South Plains College	10,153	9,365	9,459	9,473	9,528	9,594	9,659	10,015	10,397
South Texas College	27,971	33,994	33,055	33,331	33,974	34,471	34,883	35,414	37,254
Southwest Collegiate Institute for the Deaf	103	136	106	113	113	114	115	121	123
Southwest Texas Junior College	6,235	5,608	6,439	6,474	6,491	6,516	6,552	6,575	6,932
TCCD-Connect	0	13,459	9,034	9,129	9,219	9,320	9,402	9,717	9,899
TCCD-Northeast Campus	15,899	11,440	11,950	12,052	12,187	12,329	12,472	13,039	13,292
TCCD-Northwest Campus	12,032	7,690	8,550	8,735	8,860	8,993	9,121	9,640	9,808
TCCD-South Campus	11,690	7,350	7,721	7,925	8,062	8,207	8,349	8,935	9,141

	<b>Actual</b>	<b>Actual</b>	<b>Prelim.</b>	<b>Total Projections</b>					
	<b>2010</b>	<b>2015</b>	<b>2016</b>	<b>2017</b>	<b>2018</b>	<b>2019</b>	<b>2020</b>	<b>2025</b>	<b>2030</b>
TCCD-Southeast Campus	13,911	10,469	12,031	12,463	12,652	12,853	13,048	13,867	14,139
TCCD-Trinity River Campus	4,519	6,698	6,926	7,141	7,268	7,403	7,533	8,056	8,208
Temple College	5,966	5,048	4,932	4,992	5,063	5,152	5,232	5,728	6,121
Texarkana College	4,003	4,144	4,221	4,483	4,498	4,492	4,489	4,439	4,417
Texas Southmost College	11,043	4,029	5,047	5,174	5,251	5,324	5,390	5,526	5,906
Trinity Valley Community College	7,594	6,694	6,956	7,035	7,114	7,174	7,233	7,468	7,550
TSTC-Fort Bend	0	0	249	438	504	554	582	593	605
TSTC-Harlingen	5,779	4,789	5,765	5,958	6,044	6,132	6,209	6,359	6,772
TSTC-Marshall	949	899	777	807	810	863	866	885	885
TSTC-North Texas	0	0	275	597	746	858	901	946	965
TSTC-Waco	4,976	3,790	4,007	4,089	4,212	4,236	4,257	4,367	4,447
TSTC-West Texas	1,320	1,211	1,519	1,562	1,563	1,567	1,565	1,579	1,585
Tyler Junior College	11,736	9,287	9,519	9,526	9,584	9,651	9,688	9,905	10,021
Vernon College	3,167	2,891	2,972	2,974	2,980	2,987	2,993	3,044	3,080
Victoria College	4,290	4,017	4,019	4,048	4,070	4,100	4,131	4,224	4,321
Weatherford College	5,651	5,482	5,607	5,616	5,678	5,722	5,770	5,969	6,001
Western Texas College	2,307	2,127	2,183	2,187	2,185	2,192	2,197	2,258	2,249
Wharton County Junior College	6,922	7,416	7,072	7,082	7,228	7,390	7,535	8,023	8,002
<b>Two-Year Colleges Statewide Totals</b>	<b>743,252</b>	<b>718,547</b>	<b>732,472</b>	<b>742,743</b>	<b>751,890</b>	<b>761,322</b>	<b>770,178</b>	<b>807,954</b>	<b>836,524</b>

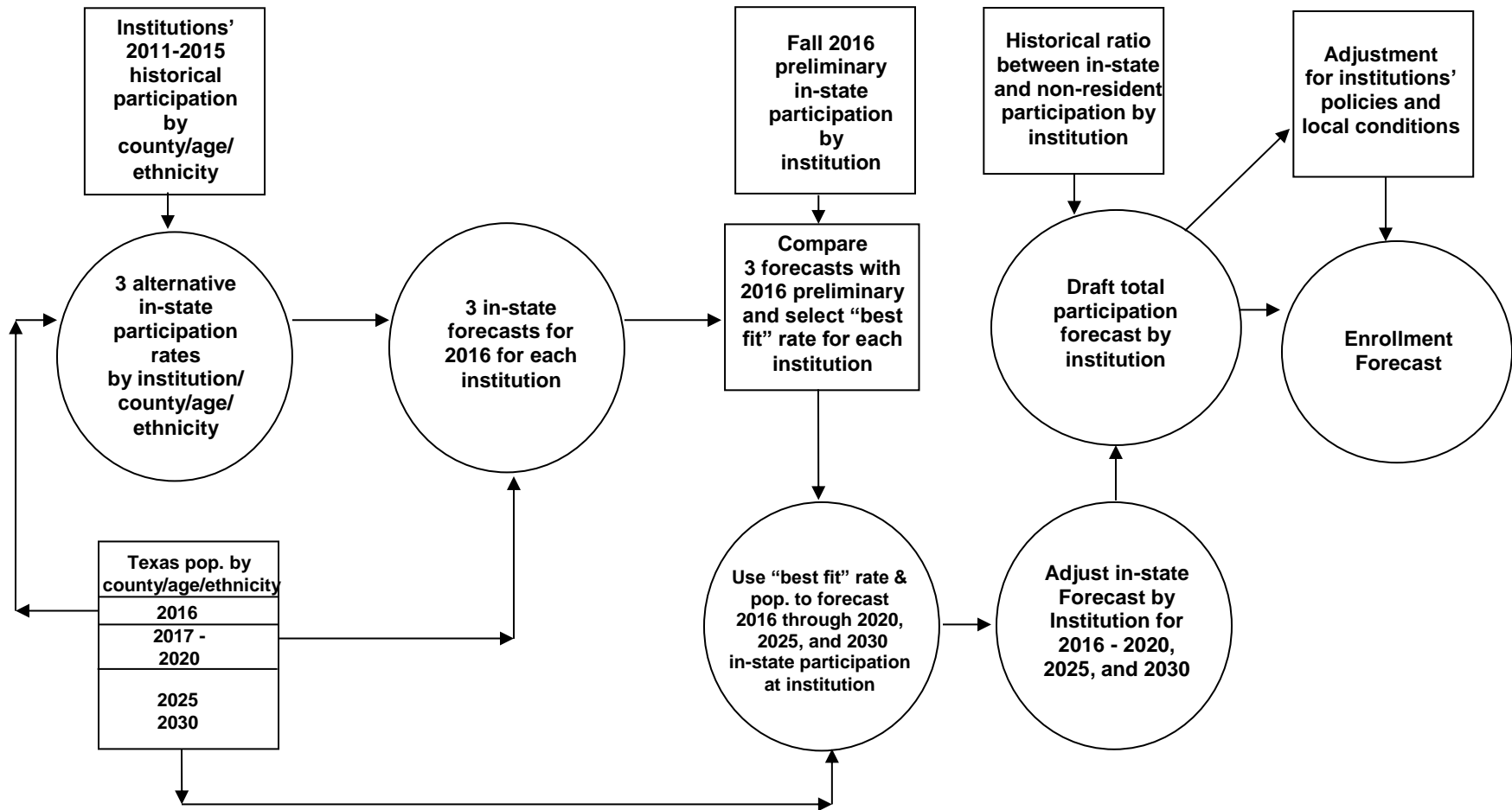
**Table 7.** Forecasted changes in fall headcount participation - public two-year colleges.

	2010-2015		2015-2020		2020-2025		2025-2030	
	Number	Percent	Number	Percent	Number	Percent	Number	Percent
ACCD-Northeast Lakeview College	2,020	154.0%	153	4.6%	93	2.7%	127	3.5%
ACCD-Northwest Vista College	735	4.6%	785	4.7%	529	3.0%	708	3.9%
ACCD-Palo Alto College	-294	-3.3%	758	8.7%	303	3.2%	225	2.3%
ACCD-San Antonio College	-4,631	-18.3%	-1,152	-5.6%	719	3.7%	769	3.8%
ACCD-St. Philip's College	370	3.4%	909	8.1%	370	3.1%	399	3.2%
Alvin Community College	-605	-10.6%	933	18.2%	472	7.8%	236	3.6%
Amarillo College	-1,964	-17.0%	518	5.4%	606	6.0%	310	2.9%
Angelina College	-759	-12.9%	250	4.9%	126	2.3%	127	2.3%
Austin Community College	-2,673	-6.4%	3,514	9.0%	3,148	7.4%	2,830	6.2%
Blinn College	1,402	7.9%	90	0.5%	356	1.8%	1,130	5.8%
Brazosport College	47	1.1%	384	9.1%	397	8.6%	251	5.0%
Central Texas College	-3,198	-25.1%	911	9.5%	882	8.4%	617	5.4%
Cisco College	-1,452	-30.6%	117	3.6%	526	15.4%	-481	-12.2%
Clarendon College	-240	-15.2%	151	11.3%	40	2.6%	-25	-1.6%
Coastal Bend College	88	2.0%	672	15.2%	93	1.8%	184	3.5%
College of the Mainland Community College District	-339	-7.8%	86	2.1%	62	1.5%	107	2.6%
Collin County Community College District	1,155	4.4%	4,876	17.6%	2,975	9.1%	691	1.9%
DCCCD-Brookhaven College	-480	-4.4%	125	1.2%	842	8.0%	665	5.9%
DCCCD-Cedar Valley College	31	0.5%	250	4.2%	261	4.2%	262	4.1%
DCCCD-Eastfield College	1,467	13.5%	887	7.2%	877	6.6%	678	4.8%
DCCCD-El Centro College	-371	-3.8%	602	6.4%	631	6.3%	469	4.4%
DCCCD-Mountain View College	764	9.6%	708	8.1%	722	7.6%	516	5.1%
DCCCD-North Lake College	-1,958	-18.0%	107	1.2%	663	7.3%	598	6.2%
DCCCD-Richland College	-632	-3.7%	380	2.3%	1,137	6.8%	959	5.4%
Del Mar College	-1,384	-11.3%	1,783	16.4%	254	2.0%	257	2.0%
El Paso Community College District	445	1.6%	1,897	6.8%	343	1.2%	1,307	4.4%
Frank Phillips College	219	18.1%	163	11.4%	27	1.7%	-73	-4.5%
Galveston College	-247	-10.7%	200	9.6%	93	4.1%	65	2.7%
Grayson County College	-581	-11.5%	278	6.3%	114	2.4%	-47	-1.0%
Hill College	-452	-10.2%	223	5.6%	64	1.5%	65	1.5%
Houston Community College System	-3,375	-6.8%	3,145	6.8%	3,488	7.0%	2,195	4.1%
Howard College	-517	-11.3%	491	12.1%	166	3.6%	38	0.8%
Kilgore College	-1,021	-15.3%	144	2.6%	242	4.2%	112	1.9%

	2010-2015		2015-2020		2020-2025		2025-2030	
	Number	Percent	Number	Percent	Number	Number	Percent	Number
Lamar Institute of Technology	-397	-12.2%	-115	-4.0%	71	2.6%	49	1.8%
Lamar State College-Orange	-331	-12.5%	30	1.3%	29	1.2%	-4	-0.2%
Lamar State College-Port Arthur	-572	-24.1%	320	17.8%	102	4.8%	81	3.7%
Laredo Community College	-1,304	-13.0%	1,098	12.6%	285	2.9%	584	5.8%
Lee College	-517	-7.7%	1,214	19.6%	286	3.9%	184	2.4%
Lone Star College System-Cy-Fair	1,996	11.8%	1,956	10.4%	1,207	5.8%	801	3.6%
Lone Star College System-Kingwood	1,670	17.0%	211	1.8%	532	4.6%	347	2.8%
Lone Star College System-Montgomery	1,038	9.3%	1,488	12.2%	981	7.2%	537	3.7%
Lone Star College System-North Harris	-228	-1.5%	542	3.6%	994	6.4%	678	4.1%
Lone Star College System-Tomball	-3,570	-33.1%	224	3.1%	276	3.7%	234	3.0%
Lone Star College System-University Park	9,428	0.0%	1,711	18.2%	577	5.2%	429	3.7%
McLennan Community College	-1,612	-16.3%	551	6.6%	226	2.6%	296	3.3%
Midland College	-931	-14.7%	461	8.5%	380	6.5%	275	4.4%
Navarro College	-562	-5.6%	9	0.1%	87	0.9%	103	1.1%
North Central Texas Community College District	131	1.4%	806	8.4%	650	6.3%	284	2.6%
Northeast Texas Community College	-522	-16.2%	481	17.8%	152	4.8%	-16	-0.5%
Odessa College	341	6.5%	467	8.4%	403	6.7%	327	5.1%
Panola College	342	14.7%	126	4.7%	30	1.1%	-14	-0.5%
Paris Junior College	-1,197	-19.3%	-119	-2.4%	62	1.3%	75	1.5%
Ranger College	464	29.2%	489	23.8%	105	4.1%	106	4.0%
San Jacinto College-Central Campus	-1,444	-9.6%	760	5.6%	833	5.8%	622	4.1%
San Jacinto College-North Campus	1,412	21.5%	555	7.0%	577	6.8%	360	3.9%
San Jacinto College-South Campus	273	2.6%	890	8.3%	789	6.8%	537	4.3%
South Plains College	-788	-7.8%	294	3.1%	357	3.7%	382	3.8%
South Texas College	6,023	21.5%	889	2.6%	531	1.5%	1,839	5.2%
Southwest Collegiate Institute for the Deaf	33	32.0%	-21	-15.2%	6	5.0%	2	1.5%
Southwest Texas Junior College	-627	-10.1%	944	16.8%	23	0.4%	357	5.4%
TCCD-Connect	13,459	0.0%	-4,057	-30.1%	315	3.3%	182	1.9%
TCCD-Northeast Campus	-4,459	-28.0%	1,032	9.0%	568	4.6%	252	1.9%
TCCD-Northwest Campus	-4,342	-36.1%	1,431	18.6%	518	5.7%	169	1.7%
TCCD-South Campus	-4,340	-37.1%	999	13.6%	586	7.0%	206	2.3%
TCCD-Southeast Campus	-3,442	-24.7%	2,579	24.6%	819	6.3%	272	2.0%
TCCD-Trinity River Campus	2,179	48.2%	835	12.5%	523	6.9%	152	1.9%
Temple College	-918	-15.4%	184	3.6%	496	9.5%	393	6.9%
Texarkana College	141	3.5%	345	8.3%	-50	-1.1%	-22	-0.5%
Texas Southmost College	-7,014	-63.5%	1,361	33.8%	136	2.5%	381	6.9%
Trinity Valley Community College	-900	-11.9%	539	8.1%	235	3.2%	82	1.1%

	2010-2015		2015-2020		2020-2025		2025-2030	
	Number	Percent	Number	Percent	Number	Number	Percent	Number
TSTC-Fort Bend	0	0.0%	582	0.0%	11	1.9%	12	2.0%
TSTC-Harlingen	-990	-17.1%	1,420	29.7%	150	2.4%	413	6.5%
TSTC-Marshall	-50	-5.3%	-33	-3.7%	19	2.1%	1	0.1%
TSTC-North Texas	0	0.0%	901	0.0%	45	5.0%	19	2.0%
TSTC-Waco	-1,186	-23.8%	467	12.3%	111	2.6%	79	1.8%
TSTC-West Texas	-109	-8.3%	354	29.3%	14	0.9%	5	0.3%
Tyler Junior College	-2,449	-20.9%	401	4.3%	217	2.2%	116	1.2%
Vernon College	-276	-8.7%	102	3.5%	52	1.7%	35	1.2%
Victoria College	-273	-6.4%	114	2.8%	93	2.3%	96	2.3%
Weatherford College	-169	-3.0%	288	5.2%	200	3.5%	31	0.5%
Western Texas College	-180	-7.8%	70	3.3%	61	2.8%	-9	-0.4%
Wharton County Junior College	494	7.1%	119	1.6%	488	6.5%	-21	-0.3%
<b>Two-Year Colleges Statewide Totals</b>	<b>-24,705</b>	<b>-3.3%</b>	<b>51,631</b>	<b>7.2%</b>	<b>37,776</b>	<b>4.9%</b>	<b>28,570</b>	<b>3.5%</b>

**Figure 2.** Enrollment forecast development process.







This document is available on the Texas Higher Education Coordinating Board website: <http://www.thecb.state.tx.us>

**For more information contact:**

Julie Eklund  
Strategic Planning and Funding  
Texas Higher Education Coordinating Board  
P.O. Box 12788  
Austin, TX 78711  
(512) 427-6533  
[Julie.Eklund@thecb.state.tx.us](mailto:Julie.Eklund@thecb.state.tx.us)