



Participation Forecast 2011-2020

Texas Institutions of Higher Education

January 2011

Planning and Accountability



Texas Higher Education Coordinating Board

Fred W. Heldenfels IV, CHAIR
Elaine Mendoza, VICE CHAIR
Joe B. Hinton, SECRETARY OF THE BOARD
Eric Rohne, STUDENT MEMBER OF THE BOARD
Durga D. Agrawal
Dennis D. Golden
Wallace L. Hall, Jr.
Harold W. Hahn
Lyn Bracewell Phillips
A. W. "Whit" Riter III

Austin
San Antonio
Crawford
Corpus Christi
Houston
Carthage
Dallas
El Paso
Bastrop
Tyler

Raymund A. Paredes, COMMISSIONER OF HIGHER EDUCATION

Mission of the Coordinating Board

The Texas Higher Education Coordinating Board's mission is to work with the Legislature, Governor, governing boards, higher education institutions and other entities to help Texas meet the goals of the state's higher education plan, *Closing the Gaps by 2015*, and thereby provide the people of Texas the widest access to higher education of the highest quality in the most efficient manner.

Philosophy of the Coordinating Board

The Texas Higher Education Coordinating Board will promote access to quality higher education across the state with the conviction that access without quality is mediocrity and that quality without access is unacceptable. The Board will be open, ethical, responsive, and committed to public service. The Board will approach its work with a sense of purpose and responsibility to the people of Texas and is committed to the best use of public monies. The Coordinating Board will engage in actions that add value to Texas and to higher education. The agency will avoid efforts that do not add value or that are duplicated by other entities.

The Texas Higher Education Coordinating Board does not discriminate on the basis of race, color, national origin, gender, religion, age, or disability in employment or the provision of services.

Participation Forecast 2011-2020

Table of Contents

Participation Forecast 2011-2020 for Texas Colleges and Universities.....	1
Texas Public College and University Participation Forecast Methodology	24
Participation Forecast for Texas Independent Colleges and Universities	43

List of Tables

Table 1:	Fall Headcount Participation Forecasts – Texas Institutions of Higher Education	5
Table 2:	Forecasted Changes in Fall Headcount Participation	5
Table 3:	Participation Projections by Region – Texas Public Institutions of Higher Education	7
Table 4:	Fall Headcount Participation Forecasts – Public Universities	13
Table 5:	Forecasted Changes in Fall Headcount Participation – Public Universities.....	15
Table 6:	Fall Headcount Participation Forecasts – Public Two-Year Colleges	17
Table 7:	Forecasted Changes in Fall Headcount Participation – Public Two-Year Colleges	20
Table 8	Fall In-State Participation by Age and Race/Ethnicity – Public Universities	26
Table 9:	Fall In-State and Nonresident Participation for Public Universities	26
Table 10:	Fall In-State Participation by Age and Race/Ethnicity – Public Two-Year Colleges	27
Table 11:	Fall In-State and Nonresident Participation for Public Two-Year Colleges	27
Table 12:	Texas Statewide Population by Age and Race/Ethnicity	29
Table 13:	In-State Participation Alternative Forecasts – Public Universities	31
Table 14:	In-State Participation Alternative Forecasts – Public Two-Year Colleges.....	32
Table 15:	In-State Participation – Public Universities Comparison of Preliminary to Forecast In-State Participation for 2009.....	35
Table 16:	In-State Participation – Public Two-Year Colleges Comparison of Preliminary to Forecast In-State Participation for 2009	36
Table 17:	Nonresident Participation Ratios – Public Universities	39
Table 18:	Nonresident Participation Ratios – Public Two-Year Colleges	40
Table 19:	Adjustments to Draft Participation Forecasts Based on Local Conditions	42
Table 20:	Participation at Public Universities and Independent Institutions.....	43
Table 21:	Participation Forecasts for Public Universities and Independent Institutions.....	44

List of Figures

Figure 1: Participation Projections and Institutional Targets: Public Colleges and Universities..... 3

Figure 2: Texas Higher Education Coordinating Board 10 Regions 6

Figure 3: Participation Forecast Development Process 23

Participation Forecast 2011-2020 for Texas Colleges and Universities

Biennially since 1979, the Texas Higher Education Coordinating Board has calculated enrollment trends and expectations which are fundamental to higher education planning. In times of changing demographics like Texas is experiencing, these forecasts become even more critical as they inform the higher education community about anticipated participation if current enrollment patterns continue. The *Participation Forecast 2011-2020* is the 17th installment in the Coordinating Board's series on this important topic.

Participation Forecast Process

The methodology used to produce the Participation Forecast has remained relatively unchanged since 1979. For public colleges and universities, it uses five years of past participation from Texas counties differentiated by age and race/ethnicity and applies these enrollment rates to population projections prepared by the Texas State Data Center. Forecasts for independent colleges and universities are derived using simple linear regression, also based on five years of past data. The methodology for both public and independent institutions does not consider possible future changes that could affect enrollments, such as improvements in high school graduation rates, increases in higher education participation by racial/ethnic groups, or changes in local policies. For that reason, the Forecast is conservative; it projects future enrollments if current trends continue.

The five years used to determine this Forecast are fall 2005 through fall 2009. The growth rate at public and independent colleges and universities from fall 2005 through fall 2008 was 6.7 percent, whereas the rate from fall 2008 to fall 2009 was a record-setting 8.1 percent. In this Forecast, the effect of the recent surge in enrollment is moderated by the slower 2005 to 2008 growth rate and by demographic changes.

The Participation Forecast concludes that, if current patterns persist, Texas public and independent two-year and four-year institutions will grow from the 1.44 million enrollees in fall 2010 to 1.49 million in 2015 (or 518,000 students more than in 2000). If true, the state would be about 100,000 students short of the 2015 *Closing the Gaps* goal of 1.59 million students. To begin the process of planning and preparing for the years beyond 2015, this report also estimates enrollments through 2020, which are predicted to be 1.59 million. (See Tables 1 and 2.)

The projections in this report are higher than the estimates for comparable years from the January 2009 Forecast. The 1.49 million enrollments projected for 2015 are 151,000 (11.3 percent) higher than the 1.34 million projected in 2009, and the 1.59 million students for 2020 is 174,000 (12.5 percent) more than the earlier 1.41 million estimate. The forecast trend lines from the 2009 and 2011 projections are nearly parallel but separated by the higher starting point for the 2011 projection because of the 2009 and 2010 enrollment jumps. (See Figure 1.)

For public universities, fall 2010 participation totaled 560,000 students, or 75,000 more students than in fall 2005. For the five-year period from 2010 to 2015, enrollments are projected to grow by 3.8 percent to 582,000 students, and then by 5.9 percent to reach 616,000 students in 2020.

Texas public two-year colleges have generally grown more rapidly than universities since the mid-1960s and are expected to continue to outpace universities in the number of students. Public colleges' preliminary participation for fall 2010 totaled 758,000 students, an increase of about 192,000 students (33.9 percent) over fall 2005 participation. This Participation Forecast estimates their enrollment will grow by just 3.2 percent

from 2010 to 2015. This lower growth rate is more conservative than the 5.4 percent increase from fall 2004 to fall 2007 because of the nature of the Forecast's methodology. The colleges' pace of growth is anticipated to jump to 8 percent from 2015 to 2020. As a result of these increases, Texas public two-year colleges are expected to enroll about 782,000 students in 2015 and 845,000 in 2020.

About 123,000 students enrolled in Texas' independent colleges and universities in fall 2010. Their enrollments are forecast to grow to 125,000 in 2015 and 129,000 in 2020.

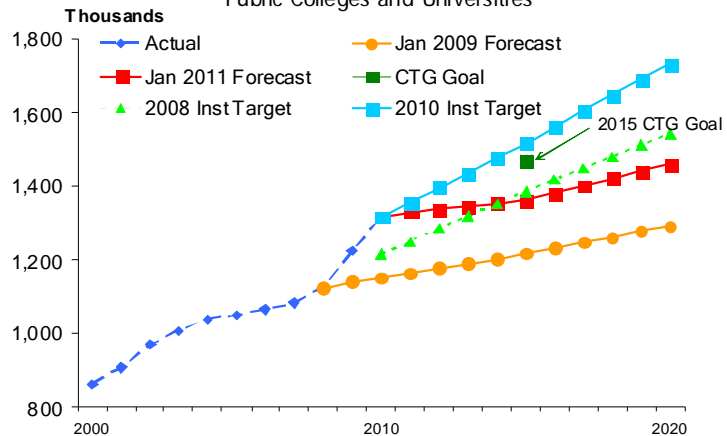
No enrollment projections are made for health-related institutions because their enrollments are more closely tied to state policies than to state population changes.

Participation Forecast, *Closing the Gaps by 2015* and Institutional CTG Targets

In contrast to the Participation Forecast, the participation goal of the Coordinating Board's *Closing the Gaps by 2015 (CTG)* higher education plan is the number of higher education students the state wants to enroll to have a participation rate comparable to other large population states and to have equal rates for all ethnic/racial groups in Texas.

To urge public institutions to help the state meet the CTG participation goal, the Coordinating Board asks each public institution to submit ambitious institutional targets for participation. The institutional targets reflect increased enrollments that result from their outreach and retention efforts.

Figure 1
Participation Forecasts and Institutional Targets
Public Colleges and Universities



The enrollments projected in this Forecast, the Coordinating Board's *CTG* participation goal for 2015, and the institutions' *CTG* targets are displayed in Figure 1. The chart shows that Texas has made great progress. While the Participation Forecast conservatively estimates that public colleges and universities are not quite on track to meet their portion of the *Closing the Gaps* goal, the targets these institutions submitted in November 2010 exceed their statewide *CTG* goal for the first time. Note that institutions only set targets for 2010, 2015, and 2020; the Coordinating Board assumed linear growth to compute institutional targets for intervening years.

The state is closer to meeting its overall participation goal than it is to reaching its targets for underrepresented ethnic/racial groups. The Coordinating Board has stated that if any ethnic/racial group does not reach its *CTG* target, the state as a whole has not achieved its goal.

Important Considerations

The following points should be remembered when reviewing this Forecast:

- The Texas State Data Center (TSDC) periodically updates its population projections and reconsiders the migration scenario that should be used for long-term projections. The 2009 report used the 2000-2004 migration scenario developed by TSDC in 2006. This Forecast used TSDC's 2008 population projections and, on their recommendation, the 2000-2007 migration scenario.
- The total population projected for 2015 in the 2009 participation forecast was 27,581,188; the total 2015 population used in this report is 28,015,550, 1.6 percent higher. For the college-going 15-34 age group, the projected population is 6.9 percent larger. Because the population forecast is an integral part of the projection methodology, the higher projected population has a direct effect on anticipated enrollments.
- The other primary factor influencing projected participation is the recent enrollment trend. As mentioned previously, fall enrollment at public and independent colleges and universities grew by 6.7 percent from 2005 to 2008, followed by an 8.1 percent increase from 2008 to 2009. Enrollment grew by another 7.1 percent between fall 2009 and fall 2010 (preliminary figure). The impressive growth of the past two years has been tempered in these projections by the slow growth in the earlier years and the conservative nature of the Forecast methodology.
- The Forecast model is strongly influenced by historical in-state participation patterns at each institution and projected population changes by county. This Forecast should not accurately reflect future participation if institutions recruit students from different geographic areas or ethnic groups, as is the goal of *CTG*. Institutional decisions to change or impose enrollment limitations would also reduce the Forecast's accuracy.

- Economics affect participation. Participation has usually expanded in times of increasing unemployment, in part because students want to prepare for better jobs. The past two years have been no exception to this phenomenon. The Participation Forecast tempers the recent growth and projects more modest rates.

Table 1
Fall Headcount Participation Forecasts - Texas Institutions of Higher Education

	Actual 2000	Actual 2005	Prelim 2010	Total Projections			
				2011	2012	2015	2020
Public Universities	414,626	484,999	560,117	565,054	569,949	581,661	615,717
Public Two-Year Colleges	447,998	566,071	757,899	764,408	768,421	782,460	844,697
Independent Colleges and Universities	108,315	114,984	123,029	123,488	124,007	125,250	128,863
Total	970,939	1,166,054	1,441,045	1,452,950	1,462,377	1,489,370	1,589,277

Table 2
Forecasted Changes in Fall Headcount Participation

	2000-2005		2005-2010		2010-2015		2015-2020	
	Number	Percent	Number	Percent	Number	Percent	Number	Percent
Public Universities	70,373	17.0%	75,118	15.5%	21,544	3.8%	34,056	5.9%
Public Two-Year Colleges	118,073	26.4%	191,828	33.9%	24,561	3.2%	62,237	8.0%
Independent Colleges and Universities	6,669	6.2%	8,045	7.0%	2,221	1.8%	3,613	2.9%
Total	195,115	20.1%	274,991	23.6%	48,325	3.4%	99,907	6.7%

Figure 2
Texas Higher Education Coordinating Board
10 Regions

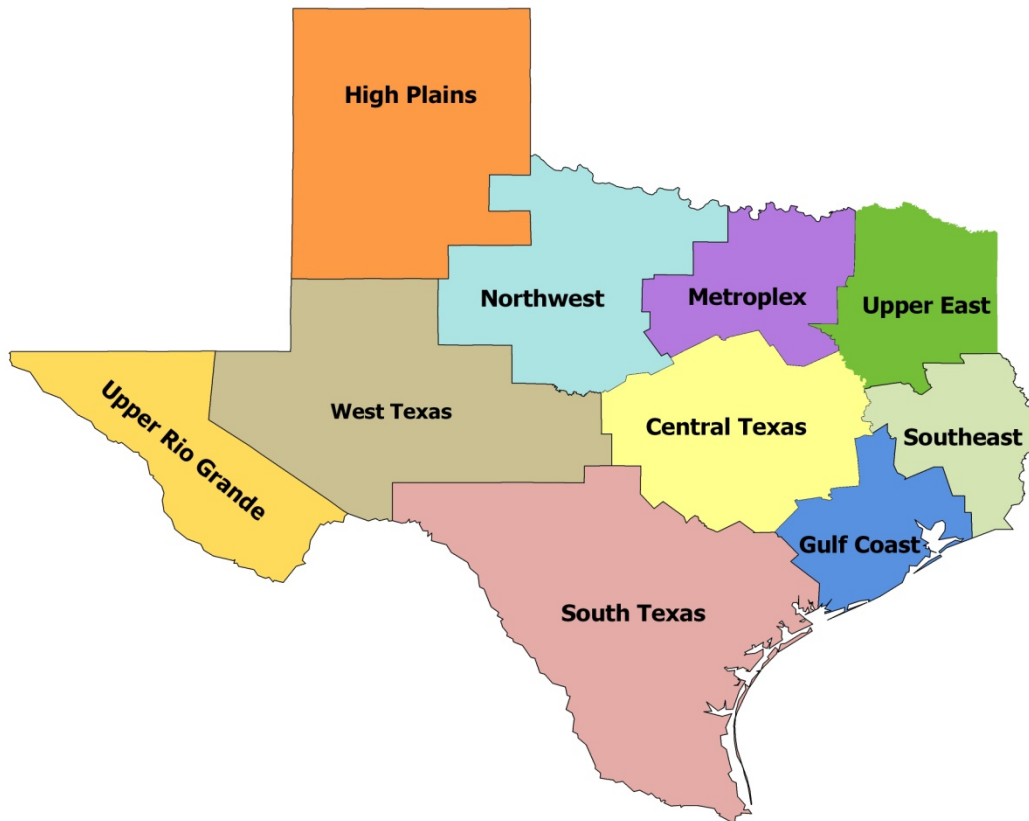


Table 3
Participation Projections by Region
Texas Public Institutions of Higher Education

	Actual 2000	Actual 2005	Prelim 2010	Total Projections			
				2011	2012	2015	2020
Central Texas Region							
Texas A&M University	44,026	44,578	49,383	49,972	49,802	48,949	49,732
Texas A&M University-Central Texas	0	0	2,321	2,351	2,385	2,483	2,579
Texas State University - San Marcos	22,423	27,129	32,580	33,453	34,372	37,000	41,500
The University of Texas at Austin	49,996	49,233	51,233	51,309	51,576	51,892	54,403
University Subtotal	116,445	120,940	135,517	137,086	138,135	140,324	148,214
Austin Community College	25,853	30,499	41,602	42,184	42,812	44,718	48,913
Blinn College	12,025	14,351	17,656	17,518	17,396	17,112	17,672
Central Texas College	6,650	8,704	10,788	10,835	10,883	11,224	12,088
Hill College	2,506	3,084	4,433	4,512	4,563	4,654	5,008
McLennan Community College	5,721	7,638	9,917	8,334	8,298	8,250	8,444
Temple College	3,381	3,897	6,103	6,125	6,155	6,360	7,043
TSTC Waco Campus	3,928	4,528	5,511	5,859	5,844	5,865	6,117
Two-Year Colleges Subtotal	60,064	72,701	96,010	95,367	95,950	98,184	105,284
Central Texas Regional Totals	176,509	193,641	231,527	232,453	234,085	238,508	253,498
Gulf Coast Region							
Prairie View A&M University	6,609	7,912	8,685	8,789	8,905	9,124	9,347
Sam Houston State University	12,348	15,308	17,282	17,368	17,455	17,718	18,166
Texas A&M University at Galveston	1,363	1,661	1,893	1,883	1,877	1,839	1,883
Texas Southern University	6,886	11,478	9,800	9,760	9,935	10,321	10,680
University of Houston	32,123	34,582	38,758	39,001	39,580	40,682	42,527
University of Houston-Clear Lake	7,580	7,826	8,106	8,208	8,314	8,614	8,996
University of Houston-Downtown	8,951	11,433	12,900	13,284	13,541	14,225	15,310
University Subtotal	75,860	90,200	97,424	98,293	99,607	102,523	106,907

	Actual 2000	Actual 2005	Prelim 2010	Total Projections			
				2011	2012	2015	2020
Alvin Community College	3,531	3,828	5,739	5,880	5,964	6,244	6,871
Brazosport College	3,855	3,604	4,175	4,220	4,263	4,413	4,814
College of the Mainland Comm Coll District	3,159	3,992	4,396	4,362	4,382	4,468	4,738
Galveston College	2,245	2,215	2,319	2,372	2,385	2,433	2,583
Houston Community College	33,509	35,595	49,776	50,133	51,034	53,483	58,703
Lee College	6,170	4,576	6,841	6,994	7,027	7,120	7,455
Lone Star College System Cy-Fair College	0	9,799	17,018	17,791	17,855	18,025	19,401
Lone Star College System Kingwood College	4,568	6,837	9,896	10,185	10,274	10,521	11,299
Lone Star College System Montgomery Coll	5,316	7,971	11,190	11,822	12,164	13,077	14,583
Lone Star College System North Harris Coll	9,118	10,878	15,278	16,307	16,506	17,083	18,836
Lone Star College System Tomball College	5,902	7,600	10,825	11,104	11,123	11,194	11,834
San Jacinto College Central Campus	10,816	12,627	15,030	15,157	15,204	15,362	16,294
San Jacinto College North Campus	4,937	5,529	6,601	6,770	6,833	7,009	7,623
San Jacinto College South Campus	6,238	8,554	10,511	10,803	10,870	11,059	11,825
Wharton County Junior College	4,571	6,008	6,962	6,852	6,956	7,170	7,604
Two-Year Colleges Subtotal	103,935	129,613	176,557	180,752	182,839	188,662	204,463
Gulf Coast Regional Totals	179,795	219,813	273,981	279,044	282,446	291,185	311,370
High Plains Region							
Texas Tech University	24,199	27,940	31,700	31,499	31,312	30,673	31,004
West Texas A&M University	6,775	7,293	7,843	7,726	7,708	7,639	7,668
University Subtotal	30,974	35,233	39,543	39,224	39,020	38,312	38,672
Amarillo College	8,181	10,391	13,431	13,411	13,435	13,510	13,822
Clarendon College	1,001	1,116	1,584	1,552	1,533	1,504	1,503
Frank Phillips College	1,153	1,207	1,213	1,219	1,204	1,180	1,238
South Plains College	7,432	9,233	10,208	10,287	10,139	10,000	10,524
Two-Year Colleges Subtotal	17,767	21,947	26,436	26,469	26,312	26,194	27,087
High Plains Regional Totals	48,741	57,180	65,979	65,693	65,332	64,506	65,759

	Actual 2000	Actual 2005	Prelim 2010	Total Projections			
				2011	2012	2015	2020
Metroplex Region							
Tarleton State University*	7,545	9,140	9,343	9,324	9,327	9,275	9,381
Texas A&M University-Commerce	7,483	8,677	10,779	10,823	10,867	11,000	11,500
Texas Woman's University	8,404	11,326	14,029	14,268	14,537	15,390	16,996
The University of Texas at Arlington	20,424	25,216	32,956	33,978	34,489	35,879	38,530
The University of Texas at Dallas	10,945	14,399	17,110	17,437	17,804	18,944	21,246
University of North Texas*	27,054	31,947	36,118	36,050	36,508	37,735	40,323
University of North Texas at Dallas	0	0	2,087	2,338	2,595	3,382	5,447
University Subtotal	81,855	100,705	122,422	124,219	126,126	131,604	143,423
Collin County Community College District	12,704	18,221	26,705	27,354	27,991	29,776	35,227
DCCCD - Brookhaven College	7,687	9,725	11,445	11,611	11,740	12,196	13,343
DCCCD - Cedar Valley College	2,799	4,300	6,254	6,256	6,257	6,269	6,514
DCCCD - Eastfield College	7,643	9,452	11,290	11,332	11,410	11,706	12,750
DCCCD - El Centro College	4,366	6,629	10,319	10,359	10,401	10,581	11,341
DCCCD - Mountain View College	4,949	6,140	8,334	8,486	8,597	8,941	9,845
DCCCD - North Lake College	6,764	8,623	11,319	11,405	11,451	11,673	12,611
DCCCD - Richland College	11,958	13,552	17,494	17,428	17,476	17,729	19,072
Grayson County College	3,260	3,715	5,342	5,395	5,373	5,401	5,664
Navarro College	3,989	6,359	10,214	10,233	10,278	10,410	11,309
North Central Texas College	4,794	6,967	9,440	9,484	9,672	10,192	11,311
TCCD - Northeast Campus	9,315	12,372	17,469	17,789	17,966	18,450	19,673
TCCD - Northwest Campus	4,199	7,356	13,436	13,517	13,666	14,098	15,230
TCCD - South Campus	7,062	9,885	12,545	12,840	13,063	13,684	14,917
TCCD - Southeast Campus	7,293	8,975	14,705	15,067	15,231	15,713	17,204
TCCD - Trinity River Campus	0	0	5,472	5,493	5,581	5,835	6,417
Weatherford College	2,751	4,437	5,731	5,732	5,765	5,820	6,021
Two-Year Colleges Subtotal	101,533	136,708	197,514	199,781	201,916	208,473	228,448
Metroplex Regional Totals	183,388	237,413	319,936	324,000	328,042	340,077	371,871

	Actual 2000	Actual 2005	Prelim 2010	Total Projections			
				2011	2012	2015	2020
Northwest Region							
Midwestern State University	5,812	6,182	6,426	5,961	5,944	5,888	5,888
University Subtotal	5,812	6,182	6,426	5,961	5,944	5,888	5,888
Cisco Junior College	2,639	3,494	4,767	4,648	4,585	4,493	4,740
Ranger College	847	758	1,612	1,785	1,765	1,749	1,850
TSTC West Texas Campus	1,563	1,660	1,432	1,483	1,468	1,450	1,481
Vernon College	2,095	2,784	3,170	3,177	3,140	3,067	3,052
Western Texas College	1,176	1,756	2,310	2,291	2,268	2,204	2,256
Two-Year Colleges Subtotal	8,320	10,452	13,291	13,385	13,226	12,965	13,380
Northwest Regional Totals	14,132	16,634	19,717	19,346	19,170	18,853	19,268
South Texas Region							
Sul Ross State University Rio Grande College	828	1,006	1,111	1,130	1,154	1,211	1,234
Texas A&M International University	3,038	4,298	6,853	6,889	6,901	6,951	8,010
Texas A&M University-Corpus Christi	6,823	8,355	10,182	10,136	10,078	9,893	9,928
Texas A&M University-Kingsville*	5,942	6,662	6,609	6,681	6,682	6,654	6,877
Texas A&M University-San Antonio	0	0	3,137	3,699	4,114	5,350	7,850
The University of Texas at Brownsville	3,157	4,759	6,780	6,841	6,888	7,005	7,792
The University of Texas at San Antonio	18,830	27,291	30,395	30,645	30,906	31,423	32,732
The University of Texas-Pan American	12,760	17,048	18,774	19,007	19,341	20,042	22,208
University of Houston-Victoria	1,698	2,491	4,096	4,184	4,285	4,646	5,287
University Subtotal	53,076	71,910	87,937	89,212	90,350	93,176	101,920
ACCD - Northeast Lakeview College	0	0	1,344	1,341	1,337	1,331	1,402
ACCD - Northwest Vista College	4,056	9,151	16,023	16,009	15,986	15,947	16,748
ACCD - Palo Alto College	6,370	8,065	9,117	9,106	9,140	9,249	9,735
ACCD - San Antonio College	20,490	21,555	25,563	25,942	26,057	26,384	27,588
ACCD - St. Philip's College	8,286	10,187	10,902	11,182	11,291	11,620	12,329
Coastal Bend College	3,026	3,353	4,342	4,134	4,085	4,059	4,168
Del Mar College	9,683	11,889	12,264	11,992	11,898	11,753	11,995
Laredo Community College	7,284	8,169	10,066	9,902	9,932	10,018	11,627

	Actual 2000	Actual 2005	Prelim 2010	Total Projections			
				2011	2012	2015	2020
South Texas College	11,183	16,233	29,242	29,573	29,789	30,389	36,034
Southwest Texas Junior College	3,716	5,067	6,306	6,185	6,121	6,014	6,352
Texas Southmost College	7,245	10,517	11,267	11,269	11,239	11,207	13,111
TSTC Harlingen Campus	3,266	4,257	6,035	5,776	5,763	5,767	6,703
Victoria College, The	4,021	3,980	4,321	4,313	4,282	4,205	4,300
Two-Year Colleges Subtotal	88,626	112,423	146,792	146,723	146,920	147,943	162,093
South Texas Regional Totals	141,702	184,333	234,729	235,935	237,270	241,119	264,012
Southeast Region							
Lamar University	8,568	10,523	14,387	14,785	14,765	14,770	14,982
Stephen F. Austin State University	11,453	11,290	12,954	12,875	12,851	12,708	12,827
University Subtotal	20,021	21,813	27,341	27,660	27,617	27,478	27,809
Angelina College	4,376	4,756	5,927	5,986	6,046	5,971	6,078
Lamar Institute of Technology	2,349	2,711	3,242	3,240	3,208	3,108	3,054
Lamar State College-Orange	1,939	2,132	2,714	2,691	2,673	2,601	2,519
Lamar State College-Port Arthur	2,508	2,501	2,487	2,472	2,458	2,425	2,429
Two-Year Colleges Subtotal	11,172	12,100	14,370	14,389	14,385	14,105	14,080
Southeast Regional Totals	31,193	33,913	41,711	42,049	42,002	41,583	41,889
Upper East Region							
Texas A&M University-Texarkana	1,195	1,549	1,833	1,918	1,922	1,929	1,907
The University of Texas at Tyler	3,592	5,746	6,445	6,350	6,341	6,276	6,295
University Subtotal	4,787	7,295	8,278	8,268	8,264	8,205	8,203
Kilgore College	3,872	4,815	6,660	6,640	6,576	6,519	6,795
Northeast Texas Community College	1,990	2,507	3,226	3,227	3,237	3,239	3,327
Panola College	1,422	1,922	2,324	2,253	2,221	2,205	2,269
Paris Junior College	2,936	4,264	6,211	6,069	6,022	6,002	6,241
Texarkana College	3,394	3,682	4,606	5,957	5,851	5,671	5,686
TSTC Marshall Campus	511	565	942	926	918	901	907
Trinity Valley Community College	4,588	5,658	7,597	7,626	7,659	7,838	8,318

	Actual 2000	Actual 2005	Prelim 2010	Total Projections			
				2011	2012	2015	2020
Tyler Junior College	8,240	9,265	11,745	11,564	11,568	11,676	12,263
Two-Year Colleges Subtotal	26,953	32,678	43,311	44,263	44,052	44,050	45,806
Upper East Regional Totals	31,740	39,973	51,589	52,531	52,316	52,255	54,009
Upper Rio Grande Region							
Sul Ross State University	2,010	1,918	2,124	2,108	2,097	2,073	2,131
The University of Texas at El Paso	15,224	19,257	22,106	22,133	22,008	21,522	21,841
University Subtotal	17,234	21,175	24,230	24,241	24,105	23,594	23,972
El Paso Community College District	17,747	24,239	27,368	27,245	27,003	26,328	27,860
Two-Year Colleges Subtotal	17,747	24,239	27,368	27,245	27,003	26,328	27,860
Upper Rio Grande Regional Totals	34,981	45,414	51,598	51,486	51,108	49,923	51,833
West Texas Region							
Angelo State University	6,290	6,140	6,856	6,743	6,647	6,459	6,504
The University of Texas of the Permian Basin	2,272	3,406	4,143	4,148	4,133	4,098	4,205
University Subtotal	8,562	9,546	10,999	10,891	10,781	10,557	10,709
Howard College	2,337	2,713	4,557	4,482	4,403	4,306	4,451
Midland College	4,841	5,584	6,353	6,335	6,269	6,189	6,434
Odessa College	4,568	4,788	5,236	5,115	5,044	4,957	5,207
Southwest Collegiate Institute for the Deaf	135	125	104	103	103	104	104
Two-Year Colleges Subtotal	11,881	13,210	16,250	16,035	15,819	15,556	16,196
West Texas Regional Totals	20,443	22,756	27,249	26,926	26,600	26,113	26,904
Public Total	862,624	1,051,070	1,318,016	1,329,462	1,338,370	1,364,120	1,460,414

*Actual enrollment and projections of Tarleton State University, Texas A&M University-Kingsville, and the University of North Texas have been affected by the creation of separate institutions (Texas A&M University-Central Texas, Texas A&M University-San Antonio, and the University of North Texas-Dallas) that were former higher education centers' whose enrollments were included with the parent institutions' counts.

Table 4
Fall Headcount Participation Forecasts—Public Universities

	Actual	Actual	Prelim	Total Projections			
	2000	2005	2010	2011	2012	2015	2020
Angelo State University	6,290	6,140	6,856	6,743	6,647	6,459	6,504
Lamar University	8,568	10,523	14,387	14,785	14,765	14,770	14,982
Midwestern State University	5,812	6,182	6,426	5,961	5,944	5,888	5,888
Prairie View A&M University	6,609	7,912	8,685	8,789	8,905	9,124	9,347
Sam Houston State University	12,348	15,308	17,282	17,368	17,455	17,718	18,166
Stephen F. Austin State University	11,453	11,290	12,954	12,875	12,851	12,708	12,827
Sul Ross State University	2,010	1,918	2,124	2,108	2,097	2,073	2,131
Sul Ross State University Rio Grande Coll	828	1,006	1,111	1,130	1,154	1,211	1,234
Tarleton State University*	7,545	9,140	9,343	9,324	9,327	9,275	9,381
Texas A&M International University	3,038	4,298	6,853	6,889	6,901	6,951	8,010
Texas A&M University	44,026	44,578	49,383	49,972	49,802	48,949	49,732
Texas A&M University at Galveston	1,363	1,661	1,893	1,883	1,877	1,839	1,883
Texas A&M University-Central Texas	0	0	2,321	2,351	2,385	2,483	2,579
Texas A&M University-Commerce	7,483	8,677	10,779	10,823	10,867	11,000	11,500
Texas A&M University-Corpus Christi	6,823	8,355	10,182	10,136	10,078	9,893	9,928
Texas A&M University-Kingsville*	5,942	6,662	6,609	6,681	6,682	6,654	6,877
Texas A&M University-San Antonio	0	0	3,137	3,699	4,114	5,350	7,850
Texas A&M University-Texarkana	1,195	1,549	1,833	1,918	1,922	1,929	1,907
Texas Southern University	6,886	11,478	9,800	9,760	9,935	10,321	10,680
Texas State University - San Marcos	22,423	27,129	32,580	33,453	34,372	37,000	41,500
Texas Tech University	24,199	27,940	31,700	31,499	31,312	30,673	31,004
Texas Woman's University	8,404	11,326	14,029	14,268	14,537	15,390	16,996
The University of Texas at Arlington	20,424	25,216	32,956	33,978	34,489	35,879	38,530
The University of Texas at Austin	49,996	49,233	51,233	51,309	51,576	51,892	54,403
The University of Texas at Brownsville	3,157	4,759	6,780	6,841	6,888	7,005	7,792
The University of Texas at Dallas	10,945	14,399	17,110	17,437	17,804	18,944	21,246
The University of Texas at El Paso	15,224	19,257	22,106	22,133	22,008	21,522	21,841
The University of Texas at San Antonio	18,830	27,291	30,395	30,645	30,906	31,423	32,732
The University of Texas at Tyler	3,592	5,746	6,445	6,350	6,341	6,276	6,295

	Actual	Actual	Prelim	Total Projections			
	2000	2005	2010	2011	2012	2015	2020
The University of Texas of Permian Basin	2,272	3,406	4,143	4,148	4,133	4,098	4,205
The University of Texas-Pan American	12,760	17,048	18,774	19,007	19,341	20,042	22,208
University of Houston	32,123	34,582	38,758	39,001	39,580	40,682	42,527
University of Houston-Clear Lake	7,580	7,826	8,106	8,208	8,314	8,614	8,996
University of Houston-Downtown	8,951	11,433	12,900	13,284	13,541	14,225	15,310
University of Houston-Victoria	1,698	2,491	4,096	4,184	4,285	4,646	5,287
University of North Texas*	27,054	31,947	36,118	36,050	36,508	37,735	40,323
University of North Texas at Dallas	0	0	2,087	2,338	2,595	3,382	5,447
West Texas A&M University	6,775	7,293	7,843	7,726	7,708	7,639	7,668
University Statewide Totals	414,626	484,999	560,117	565,054	569,949	581,661	615,717

*Actual enrollment and projections of Tarleton State University, Texas A&M University-Kingsville, and the University of North Texas have been affected by the creation of separate institutions (Texas A&M University-Central Texas, Texas A&M University-San Antonio, and the University of North Texas-Dallas) that were former higher education centers' whose enrollments were included with the parent institutions' counts.

Table 5
Forecasted Changes in Fall Headcount Participation—Public Universities

	2000-2005		2005-2010		2010-2015		2015-2020	
	Number	Percent	Number	Percent	Number	Percent	Number	Percent
Angelo State University	(150)	-2.4%	716	11.7%	(397)	-5.8%	45	0.7%
Lamar University	1,955	22.8%	3,864	36.7%	383	2.7%	212	1.4%
Midwestern State University	370	6.4%	244	3.9%	(538)	-8.4%	0	0.0%
Prairie View A&M University	1,303	19.7%	773	9.8%	439	5.0%	223	2.4%
Sam Houston State University	2,960	24.0%	1,974	12.9%	436	2.5%	447	2.5%
Stephen F. Austin State University	(163)	-1.4%	1,664	14.7%	(246)	-1.9%	119	0.9%
Sul Ross State University	(92)	-4.6%	206	10.7%	(51)	-2.4%	58	2.8%
Sul Ross State University Rio Grande Coll	178	21.5%	105	10.4%	100	9.0%	23	1.9%
Tarleton State University*	1,595	21.1%	203	2.2%	(68)	-0.7%	107	1.2%
Texas A&M International University	1,260	41.5%	2,555	59.4%	98	1.4%	1,059	15.2%
Texas A&M University	552	1.3%	4,805	10.8%	(434)	-0.9%	783	1.6%
Texas A&M University at Galveston	298	21.9%	232	14.0%	(54)	-2.9%	44	2.4%
Texas A&M University-Central Texas	0	N/A	2,321	N/A	162	7.0%	96	3.9%
Texas A&M University-Commerce	1,194	16.0%	2,102	24.2%	221	2.1%	500	4.5%
Texas A&M University-Corpus Christi	1,532	22.5%	1,827	21.9%	(289)	-2.8%	35	0.3%
Texas A&M University-Kingsville*	720	12.1%	(53)	-0.8%	45	0.7%	223	3.4%
Texas A&M University-San Antonio	0	N/A	3,137	N/A	2,213	70.5%	2,500	46.7%
Texas A&M University-Texarkana	354	29.6%	284	18.3%	96	5.2%	(21)	-1.1%
Texas Southern University	4,592	66.7%	(1,678)	-14.6%	521	5.3%	359	3.5%
Texas State University - San Marcos	4,706	21.0%	5,451	20.1%	4,420	13.6%	4,500	12.2%
Texas Tech University	3,741	15.5%	3,760	13.5%	(1,027)	-3.2%	331	1.1%
Texas Woman's University	2,922	34.8%	2,703	23.9%	1,361	9.7%	1,606	10.4%
The University of Texas at Arlington	4,792	23.5%	7,740	30.7%	2,923	8.9%	2,651	7.4%
The University of Texas at Austin	(763)	-1.5%	2,000	4.1%	659	1.3%	2,511	4.8%
The University of Texas at Brownsville	1,602	50.7%	2,021	42.5%	225	3.3%	787	11.2%
The University of Texas at Dallas	3,454	31.6%	2,711	18.8%	1,834	10.7%	2,303	12.2%
The University of Texas at El Paso	4,033	26.5%	2,849	14.8%	(584)	-2.6%	320	1.5%
The University of Texas at San Antonio	8,461	44.9%	3,104	11.4%	1,028	3.4%	1,309	4.2%
The University of Texas at Tyler	2,154	60.0%	699	12.2%	(169)	-2.6%	19	0.3%

	2000-2005		2005-2010		2010-2015		2015-2020	
	Number	Percent	Number	Percent	Number	Percent	Number	Percent
The University of Texas of Permian Basin	1,134	49.9%	737	21.6%	(45)	-1.1%	107	2.6%
The University of Texas-Pan American	4,288	33.6%	1,726	10.1%	1,268	6.8%	2,166	10.8%
University of Houston	2,459	7.7%	4,176	12.1%	1,924	5.0%	1,845	4.5%
University of Houston-Clear Lake	246	3.2%	280	3.6%	508	6.3%	382	4.4%
University of Houston-Downtown	2,482	27.7%	1,467	12.8%	1,325	10.3%	1,084	7.6%
University of Houston-Victoria	793	46.7%	1,605	64.4%	550	13.4%	641	13.8%
University of North Texas*	4,893	18.1%	4,171	13.1%	1,617	4.5%	2,588	6.9%
University of North Texas at Dallas	0	N/A	2,087	N/A	1,295	62.1%	2,065	61.1%
West Texas A&M University	518	7.6%	550	7.5%	(204)	-2.6%	30	0.4%
University Statewide Totals	70,373	17.0%	75,118	15.5%	21,544	3.8%	34,056	5.9%

*Actual enrollment and projections of Tarleton State University, Texas A&M University-Kingsville, and the University of North Texas have been affected by the creation of separate institutions (Texas A&M University-Central Texas, Texas A&M University-San Antonio, and the University of North Texas-Dallas) that were former higher education centers' whose enrollments were included with the parent institutions' counts.

**Table 6
Fall Headcount Participation Forecast—Public Two-Year Colleges**

	Actual	Actual	Prelim	Total Projections			
	2000	2005	2010	2011	2012	2015	2020
ACCD - Northeast Lakeview College	0	0	1,344	1,341	1,337	1,331	1,402
ACCD - Northwest Vista College	4,056	9,151	16,023	16,009	15,986	15,947	16,748
ACCD - Palo Alto College	6,370	8,065	9,117	9,106	9,140	9,249	9,735
ACCD - San Antonio College	20,490	21,555	25,563	25,942	26,057	26,384	27,588
ACCD - St. Philip's College	8,286	10,187	10,902	11,182	11,291	11,620	12,329
Alvin Community College	3,531	3,828	5,739	5,880	5,964	6,244	6,871
Amarillo College	8,181	10,391	13,431	13,411	13,435	13,510	13,822
Angelina College	4,376	4,756	5,927	5,986	6,046	5,971	6,078
Austin Community College	25,853	30,499	41,602	42,184	42,812	44,718	48,913
Blinn College	12,025	14,351	17,656	17,518	17,396	17,112	17,672
Brazosport College	3,855	3,604	4,175	4,220	4,263	4,413	4,814
Central Texas College District	6,650	8,704	10,788	10,835	10,883	11,224	12,088
Cisco Junior College	2,639	3,494	4,767	4,648	4,585	4,493	4,740
Clarendon College	1,001	1,116	1,584	1,552	1,533	1,504	1,503
Coastal Bend College	3,026	3,353	4,342	4,134	4,085	4,059	4,168
College of the Mainland Community College Dist	3,159	3,992	4,396	4,362	4,382	4,468	4,738
Collin County Community College District	12,704	18,221	26,705	27,354	27,991	29,776	35,227
DCCCD - Brookhaven College	7,687	9,725	11,445	11,611	11,740	12,196	13,343
DCCCD - Cedar Valley College	2,799	4,300	6,254	6,256	6,257	6,269	6,514
DCCCD - Eastfield College	7,643	9,452	11,290	11,332	11,410	11,706	12,750
DCCCD - El Centro College	4,366	6,629	10,319	10,359	10,401	10,581	11,341
DCCCD - Mountain View College	4,949	6,140	8,334	8,486	8,597	8,941	9,845
DCCCD - North Lake College	6,764	8,623	11,319	11,405	11,451	11,673	12,611
DCCCD - Richland College	11,958	13,552	17,494	17,428	17,476	17,729	19,072
Del Mar College	9,683	11,889	12,264	11,992	11,898	11,753	11,995
El Paso Community College District	17,747	24,239	27,368	27,245	27,003	26,328	27,860
Frank Phillips College	1,153	1,207	1,213	1,219	1,204	1,180	1,238
Galveston College	2,245	2,215	2,319	2,372	2,385	2,433	2,583
Grayson County College	3,260	3,715	5,342	5,395	5,373	5,401	5,664
Hill College	2,506	3,084	4,433	4,512	4,563	4,654	5,008
Houston Community College System	33,509	35,595	49,776	50,133	51,034	53,483	58,703

	Actual	Actual	Prelim	Total Projections			
	2000	2005	2010	2011	2012	2015	2020
Howard College	2,337	2,713	4,557	4,482	4,403	4,306	4,451
Kilgore College	3,872	4,815	6,660	6,640	6,576	6,519	6,795
Lamar Institute of Technology	2,349	2,711	3,242	3,240	3,208	3,108	3,054
Lamar State College-Orange	1,939	2,132	2,714	2,691	2,673	2,601	2,519
Lamar State College-Port Arthur	2,508	2,501	2,487	2,472	2,458	2,425	2,429
Laredo Community College	7,284	8,169	10,066	9,902	9,932	10,018	11,627
Lee College	6,170	4,576	6,841	6,994	7,027	7,120	7,455
Lone Star College System Cy-Fair College	0	9,799	17,018	17,791	17,855	18,025	19,401
Lone Star College System Kingwood College	4,568	6,837	9,896	10,185	10,274	10,521	11,299
Lone Star College System Montgomery College	5,316	7,971	11,190	11,822	12,164	13,077	14,583
Lone Star College System North Harris College	9,118	10,878	15,278	16,307	16,506	17,083	18,836
Lone Star College System Tomball College	5,902	7,600	10,825	11,104	11,123	11,194	11,834
McLennan Community College	5,721	7,638	9,917	8,334	8,298	8,250	8,444
Midland College	4,841	5,584	6,353	6,335	6,269	6,189	6,434
Navarro College	3,989	6,359	10,214	10,233	10,278	10,410	11,309
North Central Texas Community College District	4,794	6,967	9,440	9,484	9,672	10,192	11,311
Northeast Texas Community College	1,990	2,507	3,226	3,227	3,237	3,239	3,327
Odessa College	4,568	4,788	5,236	5,115	5,044	4,957	5,207
Panola College	1,422	1,922	2,324	2,253	2,221	2,205	2,269
Paris Junior College	2,936	4,264	6,211	6,069	6,022	6,002	6,241
Ranger College	847	758	1,612	1,785	1,765	1,749	1,850
San Jacinto College Central Campus	10,816	12,627	15,030	15,157	15,204	15,362	16,294
San Jacinto College North Campus	4,937	5,529	6,601	6,770	6,833	7,009	7,623
San Jacinto College South Campus	6,238	8,554	10,511	10,803	10,870	11,059	11,825
South Plains College	7,432	9,233	10,208	10,287	10,139	10,000	10,524
South Texas College	11,183	16,233	29,242	29,573	29,789	30,389	36,034
Southwest Collegiate Institute for the Deaf	135	125	104	103	103	104	104
Southwest Texas Junior College	3,716	5,067	6,306	6,185	6,121	6,014	6,352
TCCD - Northeast Campus	9,315	12,372	17,469	17,789	17,966	18,450	19,673
TCCD - Northwest Campus	4,199	7,356	13,436	13,517	13,666	14,098	15,230
TCCD - South Campus	7,062	9,885	12,545	12,840	13,063	13,684	14,917
TCCD - Southeast Campus	7,293	8,975	14,705	15,067	15,231	15,713	17,204
TCCD - Trinity River Campus	0	0	5,472	5,493	5,581	5,835	6,417
Temple College	3,381	3,897	6,103	6,125	6,155	6,360	7,043

	Actual	Actual	Prelim	Total Projections			
	2000	2005	2010	2011	2012	2015	2020
Texarkana College	3,394	3,682	4,606	5,957	5,851	5,671	5,686
Texas Southmost College	7,245	10,517	11,267	11,269	11,239	11,207	13,111
Trinity Valley Community College	4,588	5,658	7,597	7,626	7,659	7,838	8,318
TSTC Harlingen Campus	3,266	4,257	6,035	5,776	5,763	5,767	6,703
TSTC Marshall Campus	511	565	942	926	918	901	907
TSTC Waco Campus	3,928	4,528	5,511	5,859	5,844	5,865	6,117
TSTC West Texas Campus	1,563	1,660	1,432	1,483	1,468	1,450	1,481
Tyler Junior College	8,240	9,265	11,745	11,564	11,568	11,676	12,263
Vernon College	2,095	2,784	3,170	3,177	3,140	3,067	3,052
Victoria College, The	4,021	3,980	4,321	4,313	4,282	4,205	4,300
Weatherford College	2,751	4,437	5,731	5,732	5,765	5,820	6,021
Western Texas College	1,176	1,756	2,310	2,291	2,268	2,204	2,256
Wharton County Junior College	4,571	6,008	6,962	6,852	6,956	7,170	7,604
Two-Year Colleges Statewide Totals	447,998	566,071	757,899	764,408	768,421	782,460	844,697

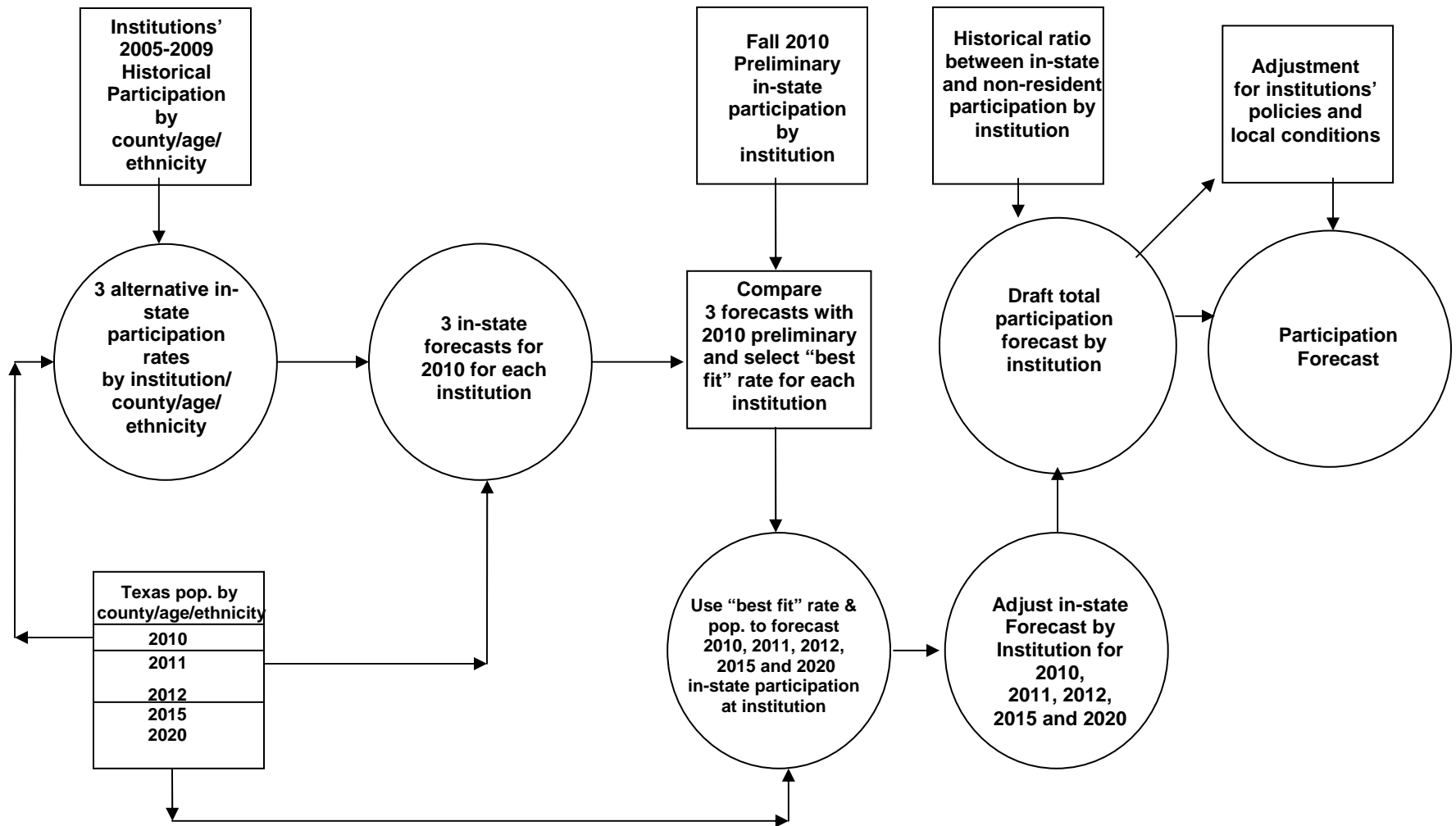
Table 7
Forecasted Changes in Fall Headcount Participation—Public Two-Year Colleges

	2000-2005		2005-2010		2010-2015		2015-2020	
	Number	Percent	Number	Percent	Number	Percent	Number	Percent
ACCD - Northeast Lakeview College	0	N/A	1,344	N/A	(13)	-1.0%	71	5.3%
ACCD - Northwest Vista College	5,095	125.6%	6,872	75.1%	(76)	-0.5%	800	5.0%
ACCD - Palo Alto College	1,695	26.6%	1,052	13.0%	132	1.4%	486	5.3%
ACCD - San Antonio College	1,065	5.2%	4,008	18.6%	821	3.2%	1,203	4.6%
ACCD - St. Philip's College	1,901	22.9%	715	7.0%	718	6.6%	709	6.1%
Alvin Community College	297	8.4%	1,911	49.9%	505	8.8%	627	10.0%
Amarillo College	2,210	27.0%	3,040	29.3%	79	0.6%	312	2.3%
Angelina College	380	8.7%	1,171	24.6%	44	0.7%	107	1.8%
Austin Community College	4,646	18.0%	11,103	36.4%	3,116	7.5%	4,195	9.4%
Blinn College	2,326	19.3%	3,305	23.0%	(544)	-3.1%	560	3.3%
Brazosport College	(251)	-6.5%	571	15.8%	238	5.7%	401	9.1%
Central Texas College District	2,054	30.9%	2,084	23.9%	436	4.0%	864	7.7%
Cisco Junior College	855	32.4%	1,273	36.4%	(274)	-5.7%	247	5.5%
Clarendon College	115	11.5%	468	41.9%	(80)	-5.1%	(1)	-0.1%
Coastal Bend College	327	10.8%	989	29.5%	(283)	-6.5%	108	2.7%
College of the Mainland Community Coll Dist	833	26.4%	404	10.1%	72	1.6%	270	6.0%
Collin County Community College District	5,517	43.4%	8,484	46.6%	3,071	11.5%	5,451	18.3%
DCCCD - Brookhaven College	2,038	26.5%	1,720	17.7%	751	6.6%	1,147	9.4%
DCCCD - Cedar Valley College	1,501	53.6%	1,954	45.4%	15	0.2%	244	3.9%
DCCCD - Eastfield College	1,809	23.7%	1,838	19.4%	416	3.7%	1,045	8.9%
DCCCD - El Centro College	2,263	51.8%	3,690	55.7%	262	2.5%	760	7.2%
DCCCD - Mountain View College	1,191	24.1%	2,194	35.7%	607	7.3%	904	10.1%
DCCCD - North Lake College	1,859	27.5%	2,696	31.3%	354	3.1%	938	8.0%
DCCCD - Richland College	1,594	13.3%	3,942	29.1%	235	1.3%	1,343	7.6%
Del Mar College	2,206	22.8%	375	3.2%	(511)	-4.2%	241	2.1%
El Paso Community College District	6,492	36.6%	3,129	12.9%	(1,040)	-3.8%	1,532	5.8%
Frank Phillips College	54	4.7%	6	0.5%	(33)	-2.7%	58	4.9%
Galveston College	(30)	-1.3%	104	4.7%	114	4.9%	150	6.2%
Grayson County College	455	14.0%	1,627	43.8%	59	1.1%	262	4.9%
Hill College	578	23.1%	1,349	43.7%	221	5.0%	354	7.6%
Houston Community College System	2,086	6.2%	14,181	39.8%	3,707	7.4%	5,220	9.8%

	2000-2005		2005-2010		2010-2015		2015-2020	
	Number	Percent	Number	Percent	Number	Percent	Number	Percent
Howard College	376	16.1%	1,844	68.0%	(251)	-5.5%	145	3.4%
Kilgore College	943	24.4%	1,845	38.3%	(141)	-2.1%	277	4.2%
Lamar Institute of Technology	362	15.4%	531	19.6%	(134)	-4.1%	(54)	-1.7%
Lamar State College-Orange	193	10.0%	582	27.3%	(113)	-4.2%	(82)	-3.1%
Lamar State College-Port Arthur	(7)	-0.3%	(14)	-0.6%	(62)	-2.5%	4	0.2%
Laredo Community College	885	12.1%	1,897	23.2%	(48)	-0.5%	1,610	16.1%
Lee College	(1,594)	-25.8%	2,265	49.5%	279	4.1%	335	4.7%
Lone Star College System Cy-Fair College	9,799	N/A	7,219	73.7%	1,007	5.9%	1,376	7.6%
Lone Star College System Kingwood College	2,269	49.7%	3,059	44.7%	625	6.3%	778	7.4%
Lone Star College System Montgomery Coll	2,655	49.9%	3,219	40.4%	1,887	16.9%	1,505	11.5%
Lone Star College System North Harris Coll	1,760	19.3%	4,400	40.4%	1,805	11.8%	1,753	10.3%
Lone Star College System Tomball College	1,698	28.8%	3,225	42.4%	369	3.4%	640	5.7%
McLennan Community College	1,917	33.5%	2,279	29.8%	(1,667)	-16.8%	194	2.3%
Midland College	743	15.3%	769	13.8%	(164)	-2.6%	245	4.0%
Navarro College	2,370	59.4%	3,855	60.6%	196	1.9%	899	8.6%
North Central Texas Community College Dist	2,173	45.3%	2,473	35.5%	752	8.0%	1,119	11.0%
Northeast Texas Community College	517	26.0%	719	28.7%	13	0.4%	89	2.7%
Odessa College	220	4.8%	448	9.4%	(279)	-5.3%	251	5.1%
Panola College	500	35.2%	402	20.9%	(119)	-5.1%	64	2.9%
Paris Junior College	1,328	45.2%	1,947	45.7%	(209)	-3.4%	240	4.0%
Ranger College	(89)	-10.5%	854	112.7%	137	8.5%	101	5.7%
San Jacinto College Central Campus	1,811	16.7%	2,403	19.0%	332	2.2%	932	6.1%
San Jacinto College North Campus	592	12.0%	1,072	19.4%	408	6.2%	613	8.8%
San Jacinto College South Campus	2,316	37.1%	1,957	22.9%	548	5.2%	767	6.9%
South Plains College	1,801	24.2%	975	10.6%	(208)	-2.0%	524	5.2%
South Texas College	5,050	45.2%	13,009	80.1%	1,147	3.9%	5,645	18.6%
Southwest Collegiate Institute for the Deaf	(10)	-7.4%	(21)	-16.8%	0	0.2%	(1)	-0.5%
Southwest Texas Junior College	1,351	36.4%	1,239	24.5%	(292)	-4.6%	338	5.6%
TCCD - Northeast Campus	3,057	32.8%	5,097	41.2%	981	5.6%	1,223	6.6%
TCCD - Northwest Campus	3,157	75.2%	6,080	82.7%	662	4.9%	1,132	8.0%
TCCD - South Campus	2,823	40.0%	2,660	26.9%	1,139	9.1%	1,233	9.0%
TCCD - Southeast Campus	1,682	23.1%	5,730	63.8%	1,008	6.9%	1,491	9.5%
TCCD - Trinity River Campus	0	0.0%	5,472	N/A	363	6.6%	582	10.0%
Temple College	516	15.2%	2,206	56.6%	257	4.2%	682	10.7%

	2000-2005		2005-2010		2010-2015		2015-2020	
	Number	Percent	Number	Percent	Number	Percent	Number	Percent
Texarkana College	288	4.0%	924	25.1%	1,065	23.1%	14	0.3%
Texas Southmost College	3,272	71.3%	750	7.1%	(60)	-0.5%	1,904	17.0%
Trinity Valley Community College	1,070	32.8%	1,939	34.3%	241	3.2%	480	6.1%
TSTC Harlingen Campus	991	193.9%	1,778	41.8%	(268)	-4.4%	937	16.2%
TSTC Marshall Campus	54	1.4%	377	66.7%	(41)	-4.4%	6	0.7%
TSTC Waco Campus	600	38.4%	983	21.7%	354	6.4%	251	4.3%
TSTC West Texas Campus	97	1.2%	(228)	-13.7%	18	1.3%	31	2.2%
Tyler Junior College	1,025	48.9%	2,480	26.8%	(69)	-0.6%	587	5.0%
Vernon College	689	17.1%	386	13.9%	(103)	-3.2%	(15)	-0.5%
Victoria College, The	(41)	-1.5%	341	8.6%	(116)	-2.7%	95	2.3%
Weatherford College	1,686	143.4%	1,294	29.2%	89	1.5%	202	3.5%
Western Texas College	580	12.7%	554	31.5%	(106)	-4.6%	52	2.3%
Wharton County Junior College	1,437	N/A	954	15.9%	208	3.0%	435	6.1%
Two-Year Colleges Statewide Totals	118,073	26.4%	191,828	33.9%	24,561	3.2%	62,237	8.0%

**Figure 3
Participation Forecast Development Process**



Texas Public College and University Participation Forecast Methodology

Participation forecasts were developed for each public college and university. Aggregate participation forecasts for the 38 public universities, the 50 public community college districts, four public technical colleges, and three state colleges were determined by examining institutional fall headcount enrollments. The forecast methodology used five years of age and racial/ethnic-specific historical public higher education participation for each Texas county. These participation data were combined with age and racial/ethnic-specific population projection data. (See Figure 3.) The individual forecasts were produced using multiple regression techniques and, in a few instances, were modified using documented adjustment factors submitted by individual institutions. A general description of the forecast steps follows. More detailed descriptions are presented in subsequent sections.

- For in-state student participation, five years (2005-2009) of participation data for students from each county were subdivided into age and racial/ethnic groups (Hispanic, African American, white, and other) at each institution. These data were matched with county population estimates from TSDC to develop three alternative, age-specific, in-state participation rates for each of the four racial/ethnic groups in each of the 254 counties. The three alternative rates were applied to 2010 population estimates to derive three alternative in-state fall 2010 participation levels for each institution.
- Each institution's three alternative forecasts were compared with its preliminary in-state participation for fall 2010 and with past participation trends. The "best fit" forecast rate chosen was that closest to the preliminary enrollment. If necessary, the "best fit" participation was adjusted using a multiplier, to calculate a rate within ± 3 percent of the in-state headcount.
- The "best fit" participation rate (possibly including an adjustment multiplier) for each institution was applied to projected population data, by county/age/ethnicity, for 2010, 2011, 2012, 2015, and 2020 to obtain a forecast of in-state participation for each institution. The resulting forecast was based on a fixed participation rate for the entire forecast period.
- Non-Texas resident participation, which includes both out-of-state and foreign students, was determined by examining the five-year record (2005-2009) and computing a ratio of nonresident to in-state students for each institution. These historical data were compared with the preliminary fall 2010 institutional reports of nonresidential enrollments. The "best fit" ratio was used to compute nonresident participation for 2010, 2011, 2012, 2015, and 2020.
- The calculated in-state and nonresident participation for each institution was combined to obtain a draft total participation forecast for 2011, 2012, 2015, and 2020.
- An adjustment was made to the draft total participation for some institutions based on known enrollment management policies. Also, the draft forecast was

sent to each institution for review prior to final publication. Based on conditions unique to specific institutions which could not be accounted for in the methodology, some adjustments were made. The accuracy of the past forecasts was also taken into consideration when evaluating institutional adjustment suggestions.

Historical Participation

Tables 8, 9, 10, and 11 provide participation data since 2005. Data in these tables present in-state and nonresident enrollments at all public universities and public two-year colleges statewide by age and race/ethnicity. This same participation information is available at the county level for each of the public institutions. Between 2000 and 2010 (preliminary), enrollment increased at public universities by 145,500 students (35.1 percent). At public community and technical colleges, enrollment increased by 309,900 students, or 69.2 percent.

At both types of institutions, increases have been greater for Hispanics than for African American, white and other students. Nevertheless, in 2010, white students made up 50.9 percent of the preliminary enrollment at public universities and 45 percent at public two-year colleges. Texas residents comprised 89.8 percent of all students at public universities and 95.2 percent at public two-year colleges.

Table 8
Fall In-State Participation by Age and Race/Ethnicity—Public Universities

Year	Age 15-19	Age 20-24	Age 25-29	Age 30-34	Age 35-39	Age 40-Up	All Ages
2005							
White	57,331	115,152	29,263	14,396	9,302	19,402	244,850
African American	13,754	20,551	6,473	3,988	2,481	4,084	51,331
Hispanic	26,789	45,799	15,642	8,259	4,493	5,854	106,839
Other	9,264	16,125	4,447	2,059	1,057	1,575	34,529
Total	107,138	197,627	55,825	28,702	17,333	30,915	437,549
2006							
White	58,086	114,893	29,738	13,650	9,455	18,292	244,122
African American	14,023	20,885	6,684	3,857	2,690	4,190	52,332
Hispanic	28,318	47,820	16,108	8,262	4,757	5,993	111,352
Other	9,952	16,653	4,734	2,089	1,163	1,640	36,233
Total	110,379	200,251	57,264	27,858	18,065	30,115	444,039
2007							
White	59,008	113,633	29,742	13,405	9,267	17,478	242,544
African American	14,341	21,227	6,754	3,950	2,857	4,364	53,494
Hispanic	30,218	49,156	16,662	8,294	4,889	6,066	115,386
Other	10,580	17,116	4,813	2,068	1,284	1,614	37,492
Total	114,147	201,132	57,971	27,717	18,297	29,522	448,916
2008							
White	58,513	113,360	30,323	13,682	9,518	17,773	243,174
African American	15,011	22,048	7,048	4,016	3,055	4,525	55,704
Hispanic	32,884	51,169	17,206	8,250	5,218	6,330	121,234
Other	11,114	18,309	5,222	2,176	1,340	1,628	39,805
Total	117,522	204,886	59,799	28,124	19,131	30,256	459,917
2009							
White	57,675	114,375	31,862	14,509	9,576	18,807	246,815
African American	15,878	23,500	7,685	4,550	3,303	5,064	59,981
Hispanic	35,902	54,831	18,367	8,885	5,483	6,807	130,483
Other	11,555	19,606	5,659	2,270	1,455	1,785	42,344
Total	121,010	212,312	63,573	30,214	19,817	32,463	479,623

Table 9
Fall In-State and Nonresident Participation for Public Universities

Year	In-State Enrollment	Nonresident Enrollment	Total Enrollment
2005	437,549	47,450	484,999
2006	444,039	47,101	491,140
2007	448,916	48,279	497,195
2008	459,917	49,219	509,136
2009	479,623	52,603	532,226
2010	503,017	57,100	560,117

Table 10
Fall In-State Participation by Age and Race/Ethnicity—Public Two-Year Colleges

Year	Age 15-19	Age 20-24	Age 25-29	Age 30-34	Age 35-39	Age 40-Up	All Ages
2005							
White	97,004	82,553	30,656	17,998	12,585	26,623	267,468
African American	15,446	16,158	9,267	7,003	4,946	8,047	60,873
Hispanic	59,507	59,099	22,990	13,602	8,071	11,377	174,963
Other	10,162	11,521	4,149	2,485	1,651	2,593	32,587
Total	182,119	169,331	67,062	41,088	27,253	48,640	535,891
2006							
White	99,834	80,265	30,297	16,986	12,544	25,568	265,583
African American	16,494	16,474	9,595	7,031	5,328	8,310	63,274
Hispanic	67,470	60,579	23,707	13,526	8,191	11,246	185,552
Other	11,454	11,542	4,216	2,429	1,734	2,688	34,109
Total	195,252	168,860	67,815	39,972	27,797	47,812	548,518
2007							
White	102,513	79,635	30,643	16,397	12,370	24,130	265,884
African American	17,719	16,749	9,543	7,075	5,343	8,464	64,990
Hispanic	73,201	61,498	23,645	13,289	8,230	10,805	191,880
Other	12,711	12,260	4,572	2,484	1,906	2,807	36,817
Total	206,144	170,142	68,403	39,245	27,849	46,206	559,571
2008							
White	107,187	79,516	31,398	16,987	12,632	24,387	272,433
African American	19,500	17,785	10,326	7,489	5,662	8,846	69,830
Hispanic	82,923	63,811	24,952	13,592	8,397	10,625	206,208
Other	13,475	13,078	5,012	2,646	2,047	2,951	39,322
Total	223,085	174,190	71,688	40,714	28,738	46,809	587,793
2009							
White	113,337	85,773	36,455	20,470	14,212	27,627	298,551
African American	22,665	20,952	12,356	9,097	6,788	10,629	82,868
Hispanic	93,768	71,668	28,542	15,521	9,788	12,375	233,506
Other	15,783	14,708	5,799	3,161	2,369	3,461	45,629
Total	245,553	193,101	83,152	48,249	33,157	54,092	660,554

Table 11
Fall In-State and Nonresident Participation for Public Two-Year Colleges

Year	In-State Enrollment	Nonresident Enrollment	Total Enrollment
2005	535,891	30,180	566,071
2006	548,518	27,194	575,712
2007	559,571	27,673	587,244
2008	587,793	29,714	617,507
2009	660,554	32,291	692,845
2010	721,471	36,428	757,899

Texas Population Projections

The Participation Forecast used the TSDC population projections, completed in fall 2008, which are based on a cohort-component technique. Projections from base population estimates provided by the 2000 federal census were made individually for people with common characteristics (in this case age, gender, and race/ethnicity) for fertility, mortality, and migration.

Age, gender, and race/ethnicity-specific fertility rates were computed using recorded births and place of residence of the mother. This information was obtained from the Texas Department of Health. Data on women by age (10 to 49) and race/ethnicity were obtained from the 2000 federal census of the population. Life survival rates for whites, Hispanics, African Americans, and others were computed using Texas Department of Health mortality data.

TSDC develops alternative forecasts based on the net migration rates for different time periods. All scenarios used the same set of mortality and fertility. Migration rates were derived using net migration estimates by age, gender and race/ethnicity for the appropriate timeframe. Population projections used in this Participation Forecast assumed net migration rates like those experienced from 2000 to 2007. The prior Forecast used TSDC's 2006 projections and their recommended 2000-2004 migration scenario. The 2000-2007 migration scenario produced a population projection for 2015 that is 1.6 percent higher than the projection used in the previous report.

Statewide population projections show several significant features of the future Texas population (see Table 12):

- Between 2010 and 2020, the total population will grow by nearly 22 percent.
- Hispanics will continue to be the fastest growing racial/ethnic group. In 2010, Hispanics comprised 38.8 percent of the population; by 2020, this share will reach 45.2 percent. The African American share will decline from 11.5 percent to 11.2 percent, while the white percentage will drop from 45.1 percent in 2010 to 37.6 percent in 2020.
- The 35 and older age group will see a greater increase in numbers than the under 35 age group, from 48.3 percent of the population in 2010 to 51.6 percent of the population in 2020.
- The 15-to-34 year-old population, which made up 30 percent of the total in 2010, will drop to 28.1 percent in 2020. The ethnic make-up of this group will change from 45.7 percent Hispanic in 2010 to 50 percent in 2020.

Although Table 12 shows the populations at the statewide level only, similar data are available for each of the 254 Texas counties.

Table 12
Texas Statewide Population by Age and Race/Ethnicity

Year	Age 0-14	Age 15-19	Age 20-24	Age 25-29	Age 30-34	Age 35-39	Age 40-Up	All Ages
2010								
White	2,015,283	705,901	754,952	751,392	678,587	731,420	5,804,060	11,441,595
African American	656,130	252,661	254,251	236,790	202,283	205,700	1,117,936	2,925,751
Hispanic	2,646,988	781,822	807,278	914,002	937,348	872,439	2,887,975	9,847,852
Other	204,284	70,518	77,121	83,013	92,250	114,762	516,801	1,158,749
Total	5,522,685	1,810,902	1,893,602	1,985,197	1,910,468	1,924,321	10,326,772	25,373,947
2011								
White	2,012,360	692,830	750,111	756,242	695,143	701,590	5,859,940	11,468,216
African American	660,330	250,185	261,129	241,442	211,958	202,336	1,151,433	2,978,813
Hispanic	2,725,363	789,634	833,074	927,733	976,968	919,039	3,047,863	10,219,674
Other	210,091	72,079	80,142	85,480	93,383	117,204	558,917	1,217,296
Total	5,608,144	1,804,728	1,924,456	2,010,897	1,977,452	1,940,169	10,618,153	25,883,999
2012								
White	2,010,840	680,187	745,339	758,060	712,119	683,050	5,903,465	11,493,060
African American	665,637	247,023	267,108	246,527	221,974	200,197	1,183,611	3,032,077
Hispanic	2,807,715	794,160	859,406	939,847	1,018,428	964,227	3,216,665	10,600,448
Other	216,027	73,489	83,261	87,979	95,505	118,443	603,454	1,278,158
Total	5,700,219	1,794,859	1,955,114	2,032,413	2,048,026	1,965,917	10,907,195	26,403,743
2015								
White	2,004,178	658,897	710,503	754,354	757,379	685,451	5,984,905	11,555,667
African American	681,167	240,435	273,495	266,543	245,066	212,057	1,272,631	3,191,394
Hispanic	3,060,258	818,414	921,780	994,031	1,126,234	1,091,428	3,780,974	11,793,119
Other	236,954	75,182	90,354	98,511	106,123	118,570	749,676	1,475,370
Total	5,982,557	1,792,928	1,996,132	2,113,439	2,234,802	2,107,506	11,788,186	28,015,550
2020								
White	1,920,752	696,313	663,284	710,192	760,726	765,203	6,095,652	11,612,122
African American	700,069	243,741	260,312	287,263	275,888	257,248	1,423,375	3,447,896
Hispanic	3,377,790	1,011,789	965,486	1,137,537	1,224,179	1,315,394	4,907,856	13,940,031
Other	262,179	95,871	96,763	115,870	125,758	135,385	1,026,574	1,858,400
Total	6,260,790	2,047,714	1,985,845	2,250,862	2,386,551	2,473,230	13,453,457	30,858,449

Participation Rate Alternatives

The five-year (2005-2009) in-state participation database and the population database were used to obtain enrollment rates for each of the four racial/ethnic groups (white, Hispanic, African American, and other) by county and age groups for each institution. Three alternative rates were calculated as follows:

(1) 2009 Racial/Ethnic Rate: The total number of students in a specific age/racial/ethnic group from each county attending each institution in 2009 divided by the total number of people of the specific age/racial/ethnic group living in the county.

(2) & (3) Trend Racial/Ethnic Rates: Using five years of observed participation data, two straight-line arithmetic trend participation levels were developed by age/racial/ethnic groups and county for each institution. These were: the 2005-2009 five-year trend extended to 2010; and the five-year trend extended to 2011. The equation $Y_c = a + bx$ was used, where:

a is the mean participation over the five-year period;

b is the deviation from the center year (2007) multiplied by the observed participation, summed and divided by the sum of the squares of the deviations; and

x = 2 for the five-year trend extended to 2010, 3 for the five-year trend extended to 2011.

The predicted trend participation (Y_c) for each age/racial/ethnic group was divided by the total number of people of the specific age/racial/ethnic group living in the county for the corresponding year.

Each of these three alternative participation rates contained attendance rates for each of the 254 counties at each institution by six age groups (15 to 19, 20 to 24, 25 to 29, 30 to 34, 35 to 39, and 40 and above) for four racial/ethnic groups (white, Hispanic, African American, and other).

In-State Participation Forecast Alternatives for 2010

Computed participation rates for each county were multiplied by the corresponding age/racial/ethnic/county population projections for 2010. This produced three alternative forecasts of students by age/racial/ethnicity from each county expected to attend each institution in 2010. Age groups were then summed to obtain statewide forecasts of white, Hispanic, African American, and other students at each institution in 2010. Total in-state participation for each of the three alternatives was obtained by summing the racial/ethnic participation.

The three alternative in-state participation levels for each institution are shown in Tables 13 and 14.

Table 13
In-State Participation Alternative Forecasts—Public Universities

	2010 Prelim	2009 (Trend) Rate	2010 (Trend) Rate	2011 (Trend) Rate
Angelo State University	6,615	6,069	6,134	6,366
Lamar University	13,484	12,997	12,832	13,825
Midwestern State University	5,392	5,339	5,342	5,400
Prairie View A&M University	8,000	8,063	7,944	8,034
Sam Houston State University	17,077	16,265	16,445	16,828
Stephen F. Austin State University	12,497	12,339	12,101	12,505
Sul Ross State University	2,057	1,948	1,949	2,046
Sul Ross State University Rio Grande Coll	1,102	1,055	1,019	1,027
Tarleton State University*	8,955	8,323	8,785	8,836
Texas A&M International University	6,512	6,091	5,966	6,441
Texas A&M University	42,200	41,650	41,825	42,864
Texas A&M University at Galveston	1,615	1,515	1,513	1,586
Texas A&M University-Central Texas	2,045	1,961	2,703	3,060
Texas A&M University-Commerce	8,989	8,725	8,621	8,735
Texas A&M University-Corpus Christi	9,387	8,746	8,799	9,078
Texas A&M University-Kingsville*	5,937	5,166	5,692	5,633
Texas A&M University-San Antonio	3,120	2,378	3,269	3,675
Texas A&M University-Texarkana	1,355	1,129	1,171	1,189
Texas Southern University	8,356	8,128	7,457	6,763
Texas State University - San Marcos	31,771	30,296	29,686	30,586
Texas Tech University	26,447	25,132	25,339	25,702
Texas Woman's University	13,373	12,786	12,429	12,793
The University of Texas at Arlington	30,050	25,656	24,102	24,395
The University of Texas at Austin	41,124	41,332	40,876	41,019
The University of Texas at Brownsville	6,482	6,487	6,698	7,190
The University of Texas at Dallas	13,540	12,669	12,187	12,488
The University of Texas at El Paso	19,078	18,107	18,106	18,564
The University of Texas at San Antonio	28,428	27,672	27,471	27,663
The University of Texas at Tyler	6,113	5,971	6,107	6,298
The University of Texas of Permian Basin	4,004	3,408	3,504	3,618
The University of Texas-Pan American	18,151	18,004	17,400	17,342
University of Houston	34,440	33,632	32,820	33,008
University of Houston-Clear Lake	6,908	6,596	6,534	6,350
University of Houston-Downtown	12,485	12,564	12,232	12,373
University of Houston-Victoria	3,844	3,539	3,396	3,585
University of North Texas*	33,116	32,791	32,835	33,196
University of North Texas at Dallas	2,034	2,105	2,892	3,254
West Texas A&M University	6,934	6,924	6,984	7,212

*Actual enrollment and projections of Tarleton State University, Texas A&M University-Kingsville, and the University of North Texas have been affected by the creation of separate institutions (Texas A&M University-Central Texas, Texas A&M University-San Antonio, and the University of North Texas-Dallas) that were former higher education centers' whose enrollments were included with the parent institutions' counts.

Table 14
In-State Participation Alternative Forecasts—Public Two-Year Colleges

	2010 Prelim	2009 (Trend) Rate	2010 (Trend) Rate	2011 (Trend) Rate
ACCD - Northeast Lakeview College	1,301	562	664	818
ACCD - Northwest Vista College	15,572	14,349	13,558	14,899
ACCD - Palo Alto College	8,985	8,304	8,109	8,141
ACCD - San Antonio College	24,892	23,317	22,344	22,807
ACCD - St. Philip's College	10,674	10,552	10,234	10,387
Alvin Community College	5,680	4,918	4,618	4,771
Amarillo College	13,306	10,812	10,478	10,639
Angelina College	5,878	5,278	5,162	5,384
Austin Community College	38,929	35,919	34,160	35,430
Blinn College	17,250	16,422	16,112	16,951
Brazosport College	4,149	3,896	3,897	3,912
Central Texas College District	8,910	9,547	8,786	9,412
Cisco College	4,675	4,059	4,060	4,366
Clarendon College	1,505	1,329	1,359	1,496
Coastal Bend College	4,171	4,089	3,898	4,160
College of the Mainland Community College Dist	4,387	3,937	3,692	3,645
Collin County Community College District	24,585	23,656	21,537	21,766
DCCCD - Brookhaven College	10,344	9,245	8,971	8,956
DCCCD - Cedar Valley College	6,086	5,257	5,082	5,318
DCCCD - Eastfield College	11,135	10,173	9,683	9,808
DCCCD - El Centro College	9,940	8,842	8,315	8,880
DCCCD - Mountain View College	8,031	7,271	6,842	6,958
DCCCD - North Lake College	10,023	9,101	8,927	9,224
DCCCD - Richland College	15,793	14,275	13,741	14,035
Del Mar College	11,773	11,708	11,427	11,559
El Paso Community College District	25,532	24,097	21,676	20,814
Frank Phillips College	1,133	1,075	1,160	1,169
Galveston College	2,264	2,094	2,126	2,126
Grayson County College	4,968	4,371	4,191	4,480
Hill College	4,320	4,217	4,128	4,379
Houston Community College System	43,538	38,754	37,658	38,880
Howard College	4,460	3,784	3,866	4,276
Kilgore College	6,487	6,074	5,917	6,375
Lamar Institute of Technology	3,219	3,073	3,006	3,178
Lamar State College-Orange	2,298	1,898	1,860	1,894
Lamar State College-Port Arthur	2,472	2,124	2,047	1,956
Laredo Community College	9,541	9,114	8,496	8,680
Lee College	6,718	6,444	6,294	6,707
Lone Star College System Cy-Fair College	16,488	13,548	13,059	14,035
Lone Star College System Kingwood College	9,685	8,217	7,850	8,173
Lone Star College System Montgomery College	10,866	9,923	9,381	9,597
Lone Star College System North Harris College	14,851	12,090	11,228	11,526
Lone Star College System Tomball College	10,571	9,170	8,830	9,264
McLennan Community College	8,239	8,888	8,590	8,990

	2010 Prelim	2009 (Trend) Rate	2010 (Trend) Rate	2011 (Trend) Rate
Midland College	6,214	5,894	5,933	6,122
Navarro College	9,941	8,880	8,752	9,365
North Central Texas Community College District	9,148	9,049	8,696	9,090
Northeast Texas Community College	3,155	2,837	2,681	2,788
Odessa College	5,068	4,919	4,861	5,036
Panola College	2,098	1,887	1,908	2,003
Paris Junior College	5,917	5,392	5,142	5,485
Ranger College	1,551	939	1,039	1,145
San Jacinto College Central Campus	14,497	13,575	12,742	12,711
San Jacinto College North Campus	6,393	5,996	5,461	5,391
San Jacinto College South Campus	9,904	9,326	8,605	8,534
South Plains College	9,963	9,371	9,302	9,684
South Texas College	28,287	26,500	25,026	26,968
Southwest Collegiate Institute for the Deaf	79	93	134	145
Southwest Texas Junior College	6,146	5,688	5,403	5,593
TCCD - Northeast Campus	17,071	14,478	13,936	14,307
TCCD - Northwest Campus	13,154	10,728	10,287	10,996
TCCD - South Campus	12,290	10,900	10,589	10,708
TCCD - Southeast Campus	14,254	12,010	11,912	12,572
TCCD - Trinity River Campus	5,362	3,430	4,710	5,293
Temple College	6,019	5,597	5,422	5,704
Texarkana College	4,567	3,163	3,158	3,293
Texas Southmost College	10,863	12,128	12,764	13,302
Trinity Valley Community College	7,462	6,651	6,280	6,473
TSTC Harlingen Campus	5,577	5,851	5,732	6,124
TSTC Marshall Campus	918	915	1,000	1,142
TSTC Waco Campus	5,393	6,338	5,769	6,304
TSTC West Texas Campus	1,381	1,649	1,814	1,915
Tyler Junior College	11,305	10,805	10,242	10,682
Vernon College	3,015	2,971	3,046	3,225
Victoria College, The	4,301	3,939	4,030	4,109
Weatherford College	5,574	5,300	5,065	5,278
Western Texas College	2,189	2,312	2,400	2,626
Wharton County Junior College	6,791	6,721	6,428	6,476

In-State Participation "Best Fit" Rate Selection

The next step was to select for each institution one of the three in-state participation rate alternatives. The following criteria were used:

1. The participation forecast produced for 2010, when compared with the certified/preliminary 2010 enrollment and the five-year trend, must be the one that most closely follows the general trend of the historical participation pattern. If the historical participation pattern is increasing, the selected alternative should show an increase. If the pattern is decreasing, the selected alternative should show a decrease. If the pattern is stable, the nearest alternative to the certified/preliminary 2010 participation is selected.
2. If the historical pattern is increasing or decreasing, the 2010 participation produced by the selected alternative must fall within ± 3 percent of the certified/preliminary 2010 participation. If the historical pattern is stable, the 2010 participation produced by the selected alternative must fall within ± 1 percent of the certified/preliminary 2010 participation. If necessary, a multiplier can be computed to satisfy this condition.

The selected "best fit" alternative (see Tables 15 and 16) determined which rate to use for each institution in forecasting 2010, 2011, 2012, 2015, and 2020 participation. The multiplier, if needed, was used to augment the forecast for each year.

Table 15
In-State Participation—Public Universities
Comparison of Preliminary to Forecast In-State Participation for 2009

	2010 Prelim In-State Participation	"Best Fit" In-State Participation	Selected Rate
Angelo State University	6,615	6,366	2011
Lamar University	13,484	13,825	2011
Midwestern State University	5,392	5,342	2010
Prairie View A&M University	8,000	8,034	2011
Sam Houston State University	17,077	16,828	2011
Stephen F. Austin State University	12,497	12,505	2011
Sul Ross State University	2,057	2,046	2011
Sul Ross State University Rio Grande College	1,102	1,055	2009
Tarleton State University*	8,955	8,836	2011
Texas A&M International University	6,512	6,441	2011
Texas A&M University	42,200	42,864	2011
Texas A&M University at Galveston	1,615	1,586	2011
Texas A&M University-Central Texas	2,045	1,961	2009
Texas A&M University-Commerce	8,989	8,735	2011
Texas A&M University-Corpus Christi	9,387	9,078	2011
Texas A&M University-Kingsville*	5,937	5,692	2010
Texas A&M University-San Antonio	3,120	3,269	2010
Texas A&M University-Texarkana	1,355	1,189	2011
Texas Southern University	8,356	8,128	2009
Texas State University - San Marcos	31,771	30,586	2011
Texas Tech University	26,447	25,702	2011
Texas Woman's University	13,373	12,793	2011
The University of Texas at Arlington	30,050	25,656	2009
The University of Texas at Austin	41,124	41,019	2011
The University of Texas at Brownsville	6,482	6,487	2009
The University of Texas at Dallas	13,540	12,669	2009
The University of Texas at El Paso	19,078	18,564	2011
The University of Texas at San Antonio	28,428	27,672	2009
The University of Texas at Tyler	6,113	6,107	2010
The University of Texas of the Permian Basin	4,004	3,618	2011
The University of Texas-Pan American	18,151	18,004	2009
University of Houston	34,440	33,632	2009
University of Houston-Clear Lake	6,908	6,596	2009
University of Houston-Downtown	12,485	12,564	2009
University of Houston-Victoria	3,844	3,585	2011
University of North Texas*	33,116	33,196	2011
University of North Texas at Dallas	2,034	2,105	2009
West Texas A&M University	6,934	6,924	2009

*Actual enrollment and projections of Tarleton State University, Texas A&M University-Kingsville, and the University of North Texas have been affected by the creation of separate institutions (Texas A&M University-Central Texas, Texas A&M University-San Antonio, and the University of North Texas-Dallas) that were former higher education centers' whose enrollments were included with the parent institutions' counts.

Table 16
In-State Participation—Public Two-Year Colleges
Comparison of Preliminary to Forecast In-State Participation for 2009

	2010 Prelim In-State Participation	"Best Fit" In-State Participation	Selected Rate
ACCD - Northeast Lakeview College	1,301	818	2011
ACCD - Northwest Vista College	15,572	14,899	2011
ACCD - Palo Alto College	8,985	8,304	2009
ACCD - San Antonio College	24,892	23,317	2009
ACCD - St. Philip's College	10,674	10,552	2009
Alvin Community College	5,680	4,918	2009
Amarillo College	13,306	10,812	2009
Angelina College	5,878	5,384	2011
Austin Community College	38,929	35,919	2009
Blinn College	17,250	16,951	2011
Brazosport College	4,149	3,912	2011
Central Texas College District	8,910	8,786	2010
Cisco College	4,675	4,366	2011
Clarendon College	1,505	1,496	2011
Coastal Bend College	4,171	4,160	2011
College of the Mainland Community College District	4,387	3,937	2009
Collin County Community College District	24,585	23,656	2009
DCCCD - Brookhaven College	10,344	9,245	2009
DCCCD - Cedar Valley College	6,086	5,318	2011
DCCCD - Eastfield College	11,135	10,173	2009
DCCCD - El Centro College	9,940	8,880	2011
DCCCD - Mountain View College	8,031	7,271	2009
DCCCD - North Lake College	10,023	9,224	2011
DCCCD - Richland College	15,793	14,275	2009
Del Mar College	11,773	11,708	2009
El Paso Community College District	25,532	24,097	2009
Frank Phillips College	1,133	1,160	2010
Galveston College	2,264	2,126	2011
Grayson County College	4,968	4,480	2011
Hill College	4,320	4,379	2011
Houston Community College System	43,538	38,880	2011
Howard College	4,460	4,276	2011
Kilgore College	6,487	6,375	2011
Lamar Institute of Technology	3,219	3,178	2011
Lamar State College-Orange	2,298	1,898	2009
Lamar State College-Port Arthur	2,472	2,124	2009
Laredo Community College	9,541	9,114	2009
Lee College	6,718	6,707	2011
Lone Star College System Cy-Fair College	16,488	14,035	2011
Lone Star College System Kingwood College	9,685	8,217	2009
Lone Star College System Montgomery College	10,866	9,923	2009
Lone Star College System North Harris College	14,851	12,090	2009
Lone Star College System Tomball College	10,571	9,264	2011

	2010 Prelim In-State Participation	"Best Fit" In-State Participation	Selected Rate
McLennan Community College	8,239	8,590	2010
Midland College	6,214	6,122	2011
Navarro College	9,941	9,365	2011
North Central Texas Community College District	9,148	9,049	2009
Northeast Texas Community College	3,155	2,837	2009
Odessa College	5,068	5,036	2011
Panola College	2,098	2,003	2011
Paris Junior College	5,917	5,485	2011
Ranger College	1,551	1,145	2011
San Jacinto College Central Campus	14,497	13,575	2009
San Jacinto College North Campus	6,393	5,996	2009
San Jacinto College South Campus	9,904	9,326	2009
South Plains College	9,963	9,684	2011
South Texas College	28,287	26,968	2011
Southwest Collegiate Institute for the Deaf	79	93	2009
Southwest Texas Junior College	6,146	5,688	2009
TCCD - Northeast Campus	17,071	14,478	2009
TCCD - Northwest Campus	13,154	10,996	2011
TCCD - South Campus	12,290	10,900	2009
TCCD - Southeast Campus	14,254	12,572	2011
TCCD - Trinity River Campus	5,362	5,293	2011
Temple College	6,019	5,704	2011
Texarkana College	4,567	3,293	2011
Texas Southmost College	10,863	12,128	2009
Trinity Valley Community College	7,462	6,651	2009
TSTC Harlingen Campus	5,577	5,732	2010
TSTC Marshall Campus	918	915	2009
TSTC Waco Campus	5,393	5,769	2010
TSTC West Texas Campus	1,381	1,649	2009
Tyler Junior College	11,305	10,805	2009
Vernon College	3,015	3,046	2010
Victoria College, The	4,301	4,109	2011
Weatherford College	5,574	5,300	2009
Western Texas College	2,189	2,312	2009
Wharton County Junior College	6,791	6,721	2009

In-State Participation Forecast

The selected "best fit" participation rate alternative for each institution and for each racial/ethnic group was applied to the corresponding age/racial/ethnic group projected population for 2010, 2011, 2012, 2015, and 2020 by county. Age groups were summed for each year, by racial/ethnic group, to provide county total participation for white, Hispanic, African American, and other students at each institution for each of the forecast years. County participation levels were summed by institution and year to provide total white, Hispanic, African American, and other student forecasts for each institution. Finally, the racial/ethnic participation levels for each institution were summed to produce total in-state participation. Multipliers were applied to some institutions' in-state participation to meet the criteria described above, if needed.

Nonresident Participation Ratios

In fall 2010 preliminary enrollment reports, the percent of out-of-state students varied from 0.5 percent to 35.3 percent at public universities and from less than 1 percent to over 20 percent at public two-year colleges. Therefore, it was necessary to determine a means of accounting for expected nonresident students in each institution. This was done by selecting a representative "nonresidential factor" for each institution, based on historical data from 2005 to 2009. The ratios of nonresident to in-state participation were compared with the preliminary 2010 nonresident to in-state ratios for each institution. The selected ratio became a factor used in the forecast process to determine nonresident participation forecasts for each institution. (See Tables 17 and 18.)

Table 17
Nonresident Participation Ratios—Public Universities

	Average	2009	Prelim 2010	Selected
Angelo State University	0.037	0.034	0.036	0.036
Lamar University	0.072	0.074	0.067	0.072
Midwestern State University	0.119	0.128	0.192	0.119
Prairie View A&M University	0.080	0.086	0.086	0.080
Sam Houston State University	0.030	0.033	0.012	0.030
Stephen F. Austin State University	0.032	0.031	0.037	0.032
Sul Ross State University	0.034	0.032	0.033	0.033
Sul Ross State University Rio Grande College	0.007	0.009	0.008	0.007
Tarleton State University	0.049	0.036	0.043	0.043
Texas A&M International University	0.063	0.052	0.052	0.052
Texas A&M University	0.159	0.169	0.170	0.170
Texas A&M University at Galveston	0.184	0.168	0.172	0.172
Texas A&M University-Central Texas	0.027	0.133	0.135	0.135
Texas A&M University-Commerce	0.065	0.055	0.199	0.065
Texas A&M University-Corpus Christi	0.051	0.078	0.085	0.085
Texas A&M University-Kingsville	0.125	0.139	0.113	0.125
Texas A&M University-San Antonio	0.001	0.003	0.005	0.005
Texas A&M University-Texarkana	0.415	0.418	0.353	0.415
Texas Southern University	0.178	0.181	0.173	0.178
Texas State University - San Marcos	0.027	0.025	0.025	0.025
Texas Tech University	0.135	0.193	0.199	0.199
Texas Woman's University	0.059	0.046	0.049	0.049
The University of Texas at Arlington	0.113	0.111	0.097	0.113
The University of Texas at Austin	0.240	0.243	0.246	0.246
The University of Texas at Brownsville	0.040	0.050	0.046	0.046
The University of Texas at Dallas	0.322	0.269	0.264	0.264
The University of Texas at El Paso	0.171	0.160	0.159	0.159
The University of Texas at San Antonio	0.055	0.057	0.069	0.069
The University of Texas at Tyler	0.039	0.034	0.054	0.039
The University of Texas of the Permian Basin	0.047	0.040	0.035	0.047
The University of Texas-Pan American	0.040	0.036	0.034	0.034
University of Houston	0.116	0.118	0.125	0.116
University of Houston-Clear Lake	0.142	0.175	0.173	0.173
University of Houston-Downtown	0.036	0.036	0.033	0.036
University of Houston-Victoria	0.036	0.060	0.066	0.066
University of North Texas	0.073	0.076	0.091	0.073
University of North Texas at Dallas	0.004	0.021	0.026	0.026
West Texas A&M University	0.121	0.119	0.131	0.121

Table 18
Nonresident Participation Ratios—Public Two-Year Colleges

	Average	2009	Prelim 2010	Selected
ACCD - Northeast Lakeview College	0.019	0.023	0.033	0.033
ACCD - Northwest Vista College	0.030	0.017	0.029	0.030
ACCD - Palo Alto College	0.009	0.009	0.015	0.009
ACCD - San Antonio College	0.039	0.038	0.027	0.039
ACCD - St. Philip's College	0.050	0.046	0.021	0.050
Alvin Community College	0.019	0.019	0.010	0.019
Amarillo College	0.009	0.011	0.009	0.009
Angelina College	0.015	0.011	0.008	0.015
Austin Community College	0.071	0.069	0.069	0.069
Blinn College	0.019	0.018	0.024	0.024
Brazosport College	0.009	0.006	0.006	0.006
Central Texas College District	0.233	0.250	0.211	0.233
Cisco College	0.013	0.020	0.020	0.020
Clarendon College	0.087	0.053	0.052	0.052
Coastal Bend College	0.006	0.002	0.041	0.006
College of the Mainland Community College District	0.001	0.002	0.002	0.002
Collin County Community College District	0.080	0.090	0.086	0.086
DCCCD - Brookhaven College	0.112	0.114	0.106	0.112
DCCCD - Cedar Valley College	0.021	0.023	0.028	0.028
DCCCD - Eastfield College	0.015	0.013	0.014	0.015
DCCCD - El Centro College	0.046	0.040	0.038	0.038
DCCCD - Mountain View College	0.031	0.040	0.038	0.038
DCCCD - North Lake College	0.135	0.147	0.129	0.135
DCCCD - Richland College	0.090	0.111	0.108	0.108
Del Mar College	0.022	0.017	0.042	0.022
El Paso Community College District	0.062	0.067	0.072	0.072
Frank Phillips College	0.072	0.078	0.071	0.072
Galveston College	0.040	0.047	0.024	0.040
Grayson County College	0.095	0.074	0.075	0.095
Hill College	0.023	0.023	0.026	0.023
Houston Community College System	0.131	0.105	0.143	0.131
Howard College	0.028	0.027	0.022	0.028
Kilgore College	0.036	0.030	0.027	0.036
Lamar Institute of Technology	0.016	0.019	0.007	0.016
Lamar State College-Orange	0.160	0.184	0.181	0.181
Lamar State College-Port Arthur	0.008	0.009	0.006	0.008
Laredo Community College	0.032	0.026	0.055	0.032
Lee College	0.039	0.021	0.018	0.039
Lone Star College System Cy-Fair College	0.077	0.069	0.032	0.077
Lone Star College System Kingwood College	0.043	0.036	0.022	0.043
Lone Star College System Montgomery College	0.054	0.056	0.030	0.054
Lone Star College System North Harris College	0.085	0.077	0.029	0.085
Lone Star College System Tomball College	0.050	0.043	0.024	0.050
McLennan Community College	0.020	0.022	0.204	0.020
Midland College	0.029	0.030	0.022	0.029

	Average	2009	Prelim 2010	Selected
Navarro College	0.035	0.028	0.027	0.027
North Central Texas Community College District	0.019	0.016	0.032	0.019
Northeast Texas Community College	0.034	0.027	0.023	0.023
Odessa College	0.030	0.027	0.033	0.030
Panola College	0.102	0.105	0.108	0.102
Paris Junior College	0.032	0.032	0.050	0.032
Ranger College	0.070	0.039	0.039	0.039
San Jacinto College Central Campus	0.043	0.042	0.037	0.043
San Jacinto College North Campus	0.050	0.048	0.033	0.050
San Jacinto College South Campus	0.084	0.079	0.061	0.084
South Plains College	0.048	0.046	0.025	0.048
South Texas College	0.000	0.000	0.034	0.034
Southwest Collegiate Institute for the Deaf	0.290	0.237	0.316	0.290
Southwest Texas Junior College	0.010	0.007	0.026	0.010
TCCD - Northeast Campus	0.031	0.030	0.023	0.031
TCCD - Northwest Campus	0.025	0.022	0.021	0.021
TCCD - South Campus	0.027	0.025	0.021	0.027
TCCD - Southeast Campus	0.046	0.043	0.032	0.046
TCCD - Trinity River Campus	0.005	0.024	0.021	0.021
Temple College	0.018	0.017	0.014	0.018
Texarkana College	0.335	0.346	0.009	0.335
Texas Southmost College	0.034	0.023	0.037	0.034
Trinity Valley Community College	0.016	0.018	0.018	0.018
TSTC Harlingen Campus	0.009	0.007	0.082	0.009
TSTC Marshall Campus	0.019	0.028	0.026	0.026
TSTC Waco Campus	0.020	0.014	0.022	0.020
TSTC West Texas Campus	0.010	0.016	0.037	0.010
Tyler Junior College	0.019	0.023	0.039	0.019
Vernon College	0.055	0.046	0.051	0.055
Victoria College, The	0.014	0.013	0.005	0.014
Weatherford College	0.024	0.022	0.028	0.024
Western Texas College	0.039	0.056	0.055	0.055
Wharton County Junior College	0.002	0.001	0.025	0.002

Draft Total Participation Forecast and Adjustments

At this point in the Forecast process, total in-state participation forecasts for 2011, 2012, 2015, and 2020, plus a nonresident factor, had been calculated for each institution. Multiplying the selected nonresident factor by the in-state participation produced nonresident participation by institution and year. Nonresident and in-state participation levels were added to produce a base total participation forecast for each institution for 2011, 2012, 2015, and 2020. The selected alternative used to forecast in-state participation and the factor which produced nonresident participation were controlled by quantifiable historical participation patterns and expected demographic changes. Consequently, the participation forecasts which they produced did not take into account future changes in the status of institutions or internal, non-quantifiable conditions which could influence participation at a specific college or university. These were addressed, to some degree, by making adjustments to institutional draft forecasts as appropriate:

- Some public universities have, or intend to establish, policies that will cap enrollment at specific levels. For these institutions, the model might possibly forecast an excess number of students. In cases where this occurred, the excess was subtracted and redistributed to other institutions.
- Other institutions have responded with limitations on capacity, new programs, or other institution-specific items for adjustment. Table 19 itemizes the institutional adjustments used to modify the Participation Forecasts.

Table 19
Adjustments to Draft Participation Forecasts Based on Local Conditions

	2011	2012	2015	2020
Texas A&M University - Commerce	1,152	1,082	826	543
Ranger College	500	500	500	500
Sam Houston State University	8	66	385	644
Texas State University-San Marcos	757	1,514	3,784	6,993
Angelina College	76	200	200	200
Collin County Community College District	-697	-1,394	-3,485	-4,259
Texas A&M University-San Antonio	354	708	1,771	4,044
University of North Texas at Dallas	211	422	1,055	2,869

Participation Forecast for Texas Independent Colleges and Universities

Forecasts of total participation at the independent colleges and universities (two-year and four-year) were computed by first deriving a linear regression equation of independent institutions' total fall enrollment as a function of public universities' total fall enrollment for five years (2005-2009). The data for deriving the equation are displayed in Table 20.

Table 20
Participation at Public Universities and Independent Institutions

	Public Universities	Independent Institutions
2005	484,999	114,984
2006	491,190	115,684
2007	497,195	116,278
2008	506,136	117,722
2009	532,226	120,011

Forecasts of enrollment at independent institutions for 2010, 2011, 2012, 2015, and 2020 were then derived by entering forecasted enrollment at public universities for those years in the regression equation. The regression forecast for 2010 was adjusted by a multiplier to account for past error. The forecasts are shown in Table 21.

Table 21
Participation Forecasts for Public Universities and Independent Institutions

	Public Universities	Independent Institutions
2010	560,117	121,557
2011	565,054	123,488
2012	569,949	124,007
2015	581,661	125,250
2020	615,717	128,863

Related reports available from the Texas Higher Education Coordinating Board, Division of Planning and Information Resources:

Closing the Gaps by 2015, adopted 2000, revised October 2005
<http://www.thecb.state.tx.us/reports/PDF/0379.PDF> and
<http://www.thecb.state.tx.us/reports/PDF/1176.PDF>

Closing the Gaps by 2015: Annual Progress Reports
<http://www.thecb.state.tx.us/ClosingtheGaps/>

Regional Plan for Texas Higher Education, November 2010
<http://www.thecb.state.tx.us/Reports/PDF/2070.PDF>



This document is available on the Texas Higher Education Coordinating Board Website: <http://www.thecb.state.tx.us>

For more information contact:

Janet Beinke, Director of Planning and Performance

Planning and Accountability

Texas Higher Education Coordinating Board

P. O. Box 12788

Austin, Texas 78711

(512) 427-6321

(512) 427-6147 (Fax)

janet.beinke@thecb.state.tx.us