

Council for Continuous Improvement and Innovation in Texas Higher Education



Closing the Gaps by 2015 *An Update on Progress Made*

Deputy Commissioner David Gardner
November 2011

Council for Continuous Improvement and Innovation in Texas Higher Education

Trends in Texas Higher Education

- A growing **unskilled, under-educated population** that cannot meet the demands of a technology-based workplace.
- Average **household income** in Texas is **projected to decline by about \$4,800** in constant dollars from 2010 to 2040 (lowering 2040 household income by about \$92 billion).



Source: Texas State Data Center

Page 2
11/2011

By 2015, Close the Gaps in:

- ✓ **Participation**
- ✓ **Success**
- ✓ **Excellence**
- ✓ **Research**



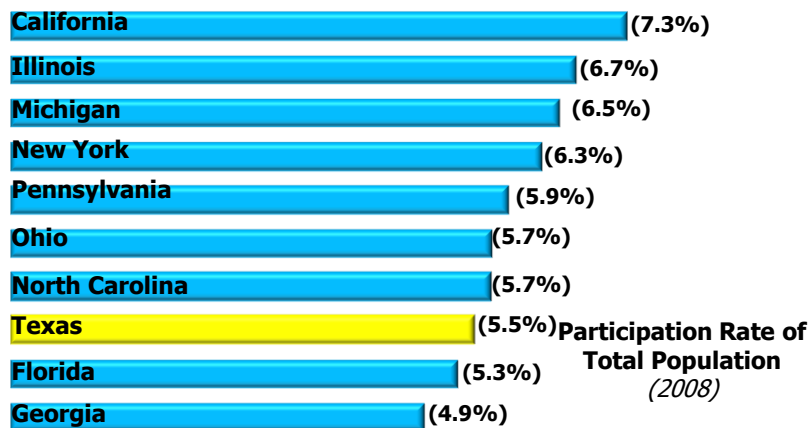
Participation

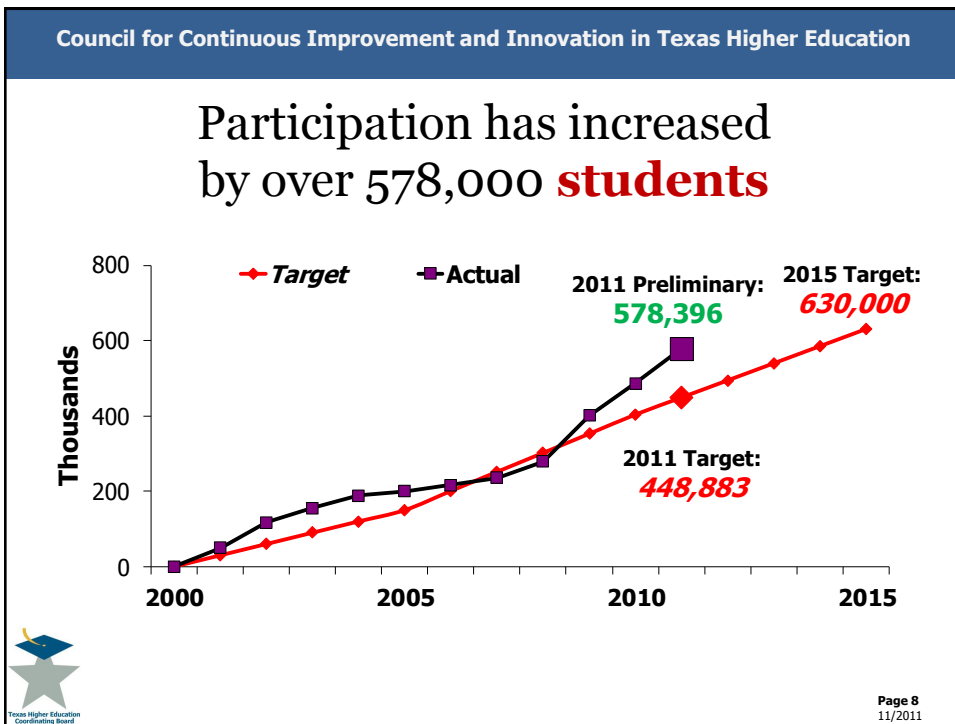
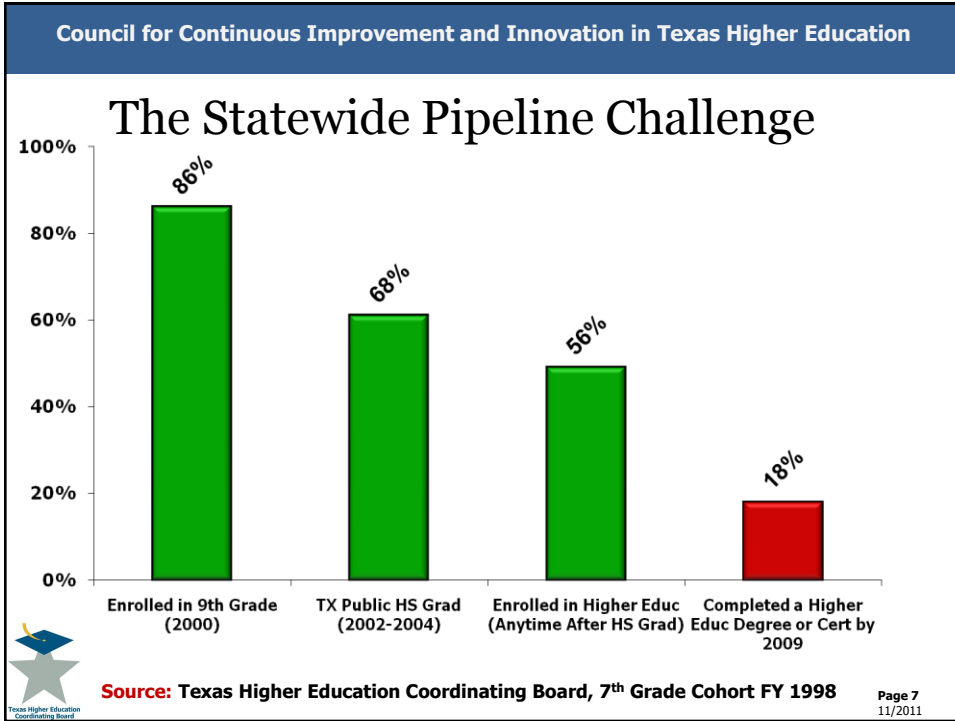
By 2015, increase enrollments by
630,000 more students.



2011 progress report on **Participation**

Participation Target	Progress Toward TARGET
Statewide participation	Above target
African American participation	Above target
Hispanic participation	Well below target
White participation	Below target

Texas' Participation rate has improved but **remains lower than other states**



74% of Growth at Two-Year Colleges

	Preliminary Total	Change From '10	% Change
Public Universities	571,323	13,773	2.5%
Public Two-Year Colleges	789,713	46,461	6.3%
All Health-Related	24,140	1,207	5.3%
Independent Col. & Univ.	123,920	1,026	.8%
Total*	1,509,098	62,467	4.3%

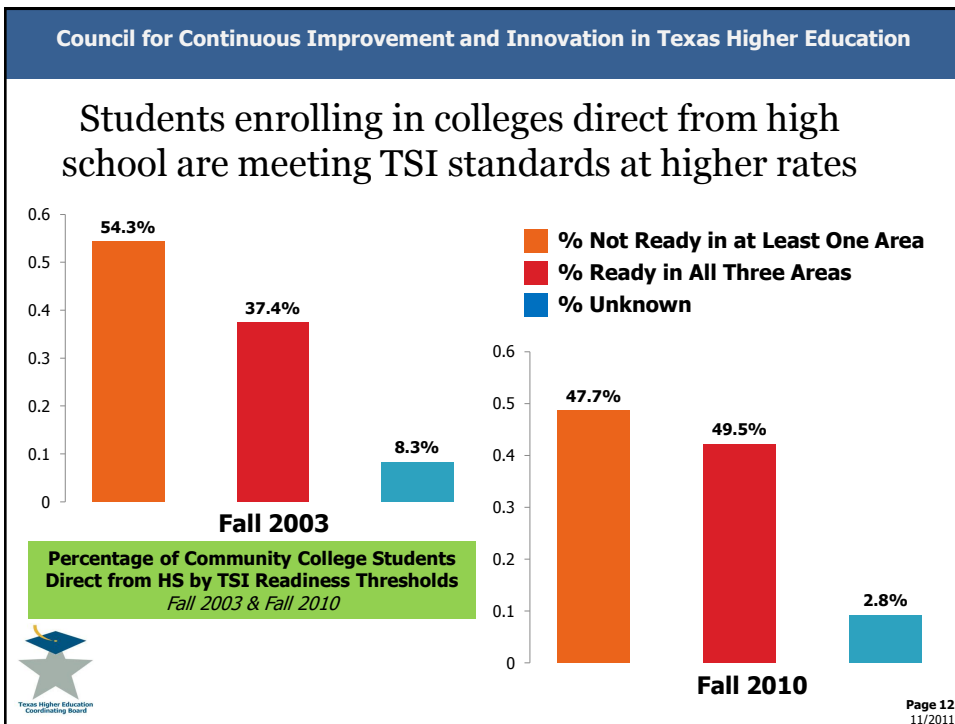
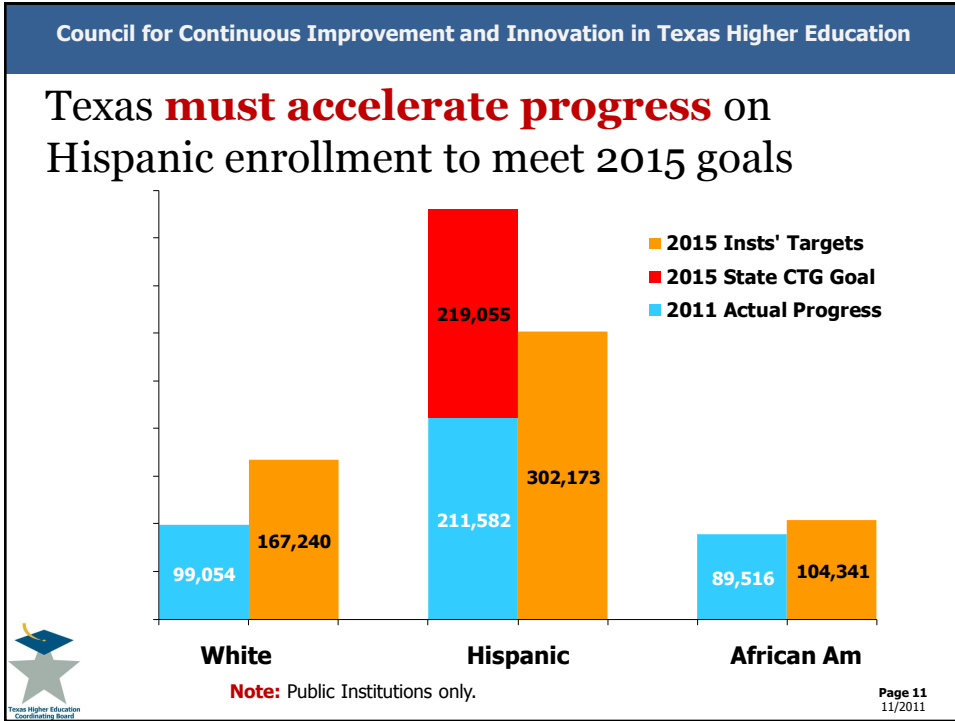


Career Colleges show an increase of 30,000 – due to an increase in the number of institutions that report.

Enrollment among all ethnic groups remains strong

	Preliminary Total	Change From '10	% Change
White	653,187	11,137	1.7%
Hispanic	447,826	19,204	4.5%
African-American	195,575	17,714	9.9%
Other	159,348	35,342	17.8%
Total*	1,509,098	62,467	4.3%





Success

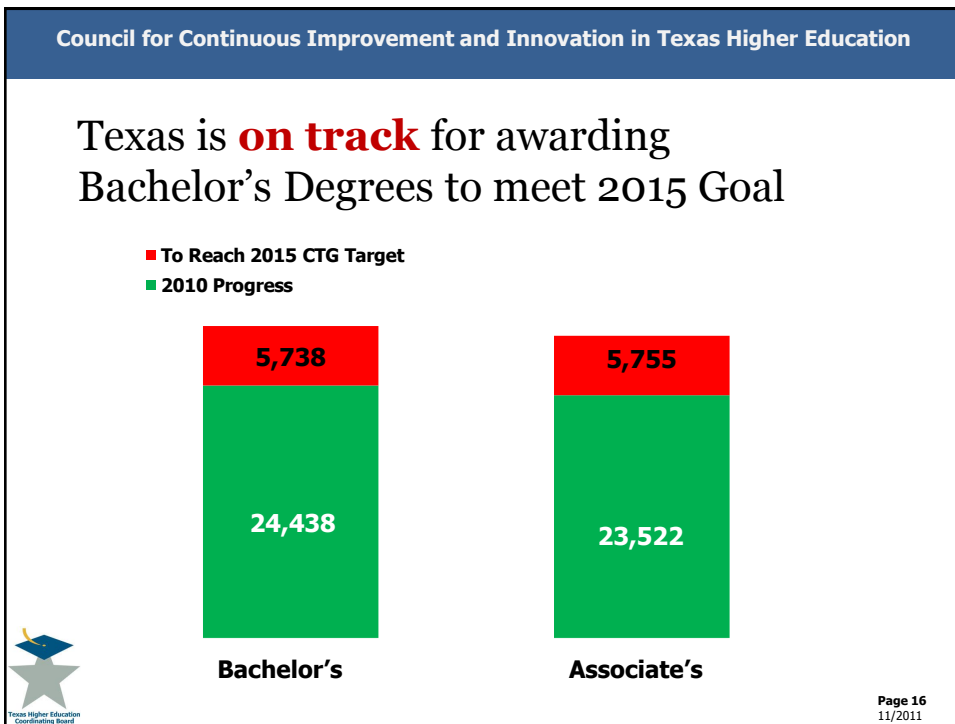
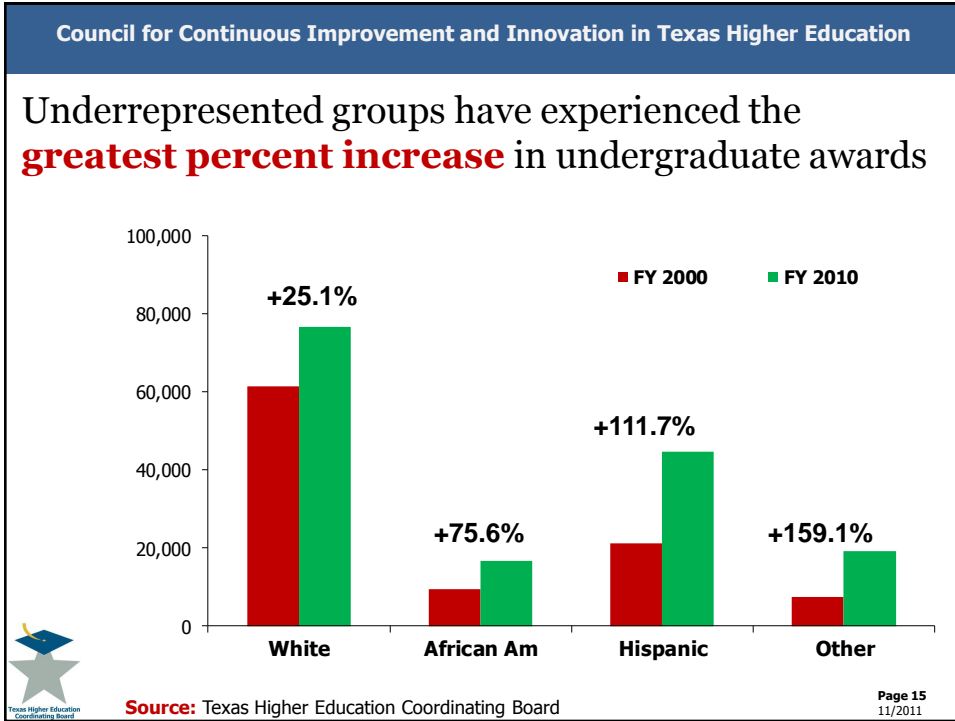
By 2015, award **210,000** undergraduate degrees, certificates and other identifiable student successes from high quality programs.

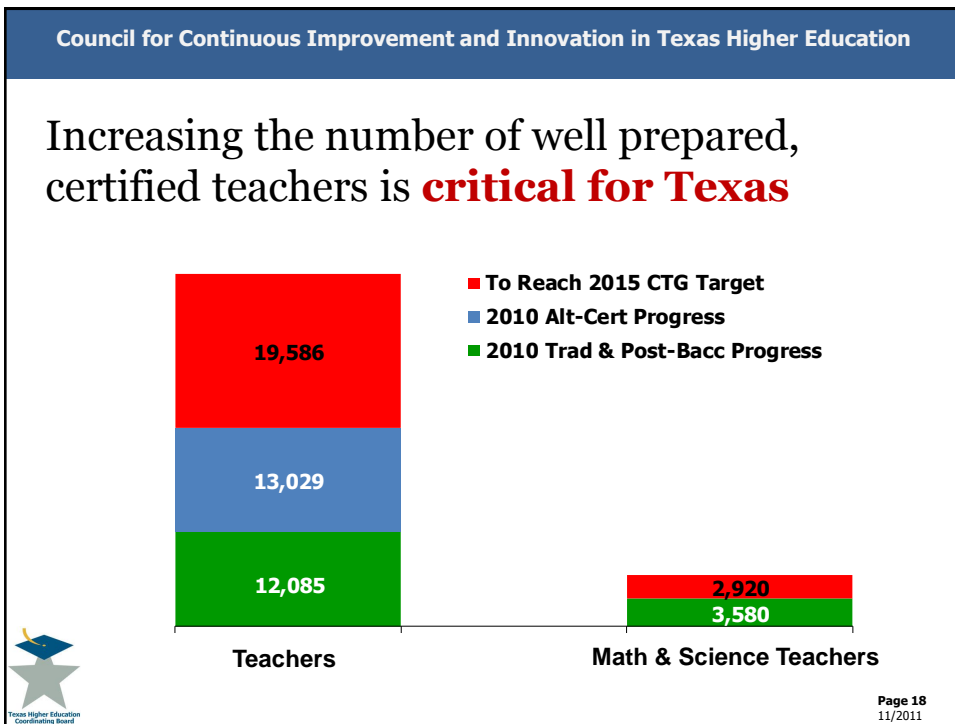
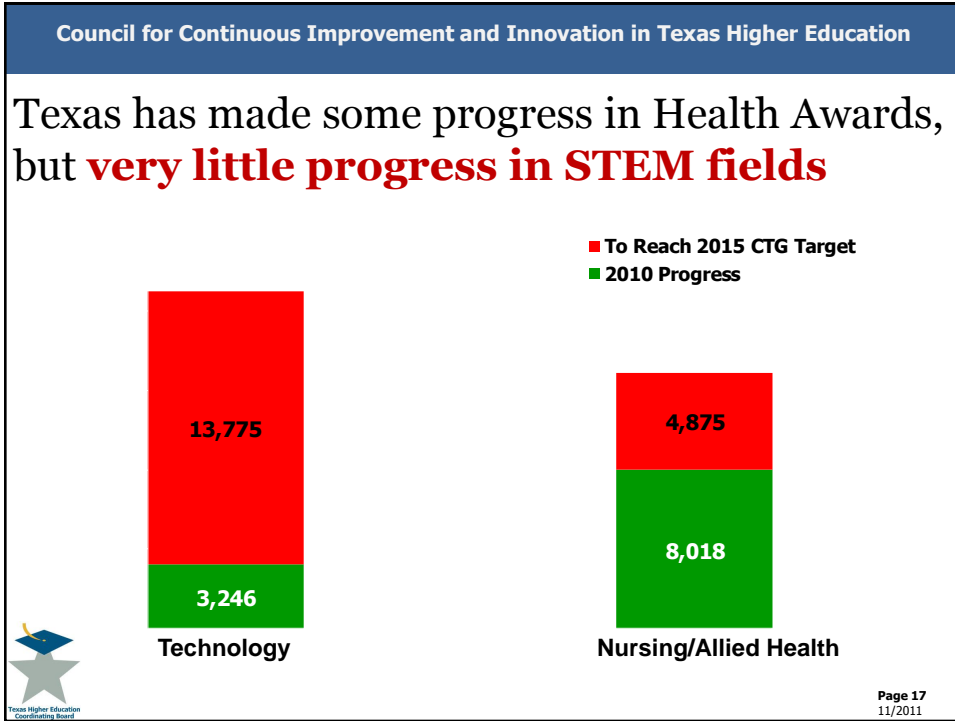


2010 progress report on **Success**

Success Target	Progress Toward 2010 TARGET
Statewide certificates, associate degrees, and bachelor degrees	Above target
African American awards	Below target
Hispanic awards	Below target
Technology awards	Well below target
Allied health and nursing awards	Above target
Teacher certifications	Well below target







Excellence

By 2015, substantially increase the number of **nationally recognized programs** or services at colleges and universities in Texas.

Research

By 2015, increase the level of federal science and engineering research funding to Texas institutions to **6.5%** of obligations to higher education.



2011 progress report on **Excellence** and **Research**

Excellence Target	Comparison with Target Line
National rankings	Well below target
Program recognition	On target
Research Target	Comparison with Target Line
Federal science and engineering research and development obligations	Below target
Public universities' research expenditures	Well above target



Undergraduate **Excellence**

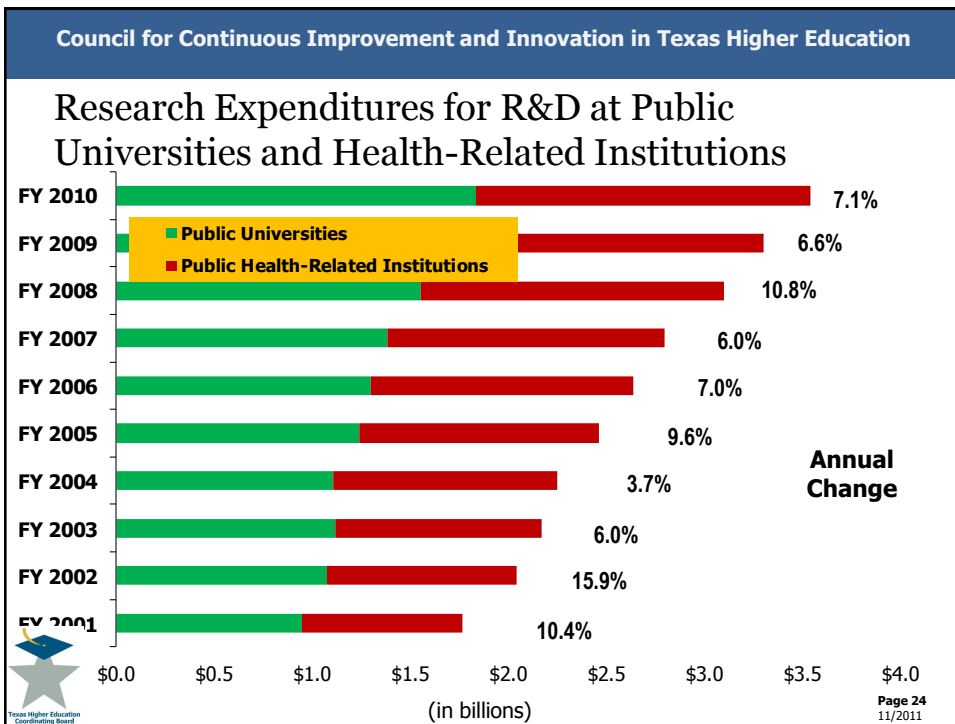
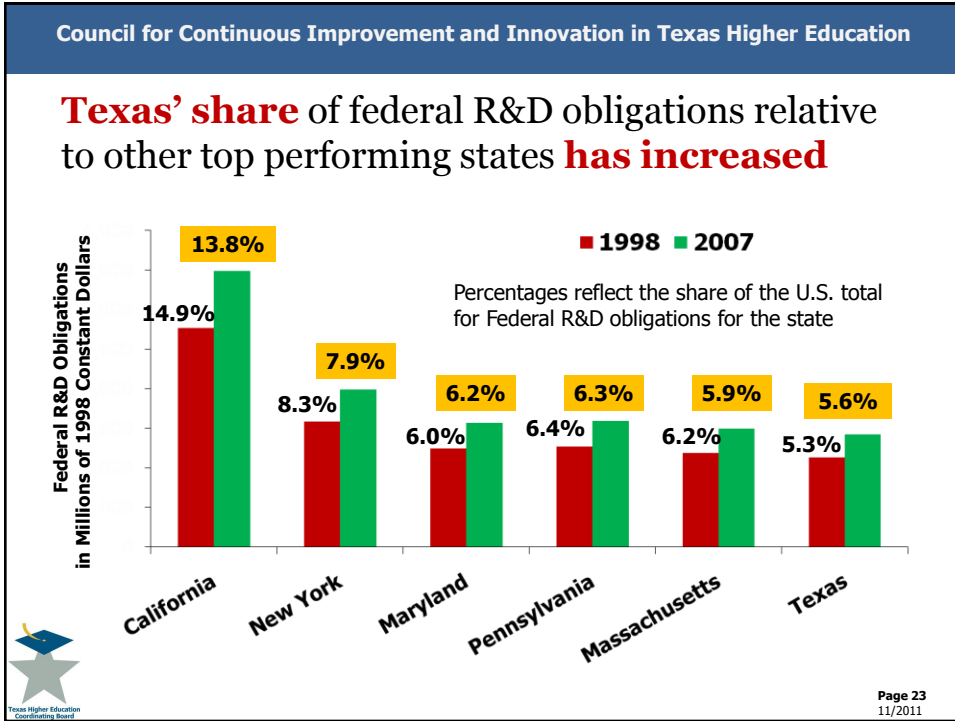
- Access to excellent undergraduate education is critical.
- **78%** of all public university students are undergraduates.
- **90%** of all public college and university students are undergraduates.
- **44%** of all public college and university students are freshmen.



UC-Berkeley **has more National Academy Members** than all Texas institutions

	Science	Engineering	Medicine	Total
UT Austin	16	47	7	70
TAMU/TAMUSHSC	6	13	3	22
Rice U	3	13	1	17
UT Med Cntr-Dallas	19	0	19	38
U of Houston	2	8	0	10
Baylor CO Medicine	5	0	13	18
UTHSC-San Antonio	0	0	3	3
UTHSC Houston	1	0	4	5
UT Med Br-Galveston	0	0	3	3
UT Dallas	1	3	0	4
Other (SMU, MDA, UNT, UTSA, TTU)	2	3	2	7
State of Texas Total	55	87	55	197
UC-Berkeley	131	74	12	217

As of Oct 2011



Texas has **accomplished much** since 2000

- The percentage of students entering public higher education from public high schools **has increased from 46.4% to 51.1%**.
- By preliminary fall 2011, more than **550,000 additional students** are enrolled in public, independent, and career higher education.



Texas has **accomplished much** since 2000:

- By fall 2010, more than **99%** of university and **88%** of community college students enrolling directly from high school had completed the RHSP or above.
- **47,000 additional** bachelor's and associate's degrees were awarded.



Texas has **accomplished much**
since 2000

- Undergraduate nursing degrees have **increased by 5,242.**
- Undergraduate engineering awards have **increased by 3,079.**
- In 2003, the 78th Texas Legislature allowed universities, like health-related institutions, to **retain 100%** of their research indirect cost revenue.

