



Texas A&M Blinn TEAM Program (Transfer Enrollment at A&M)



Dr. Kriss H. Boyd

Executive Director

Transition Academic Programs

Texas A&M University

Dr. John O. Beaver

Dean of Academic Affairs

Bryan Campus

Blinn College

Dr. Russ T. Graves

Director, TAMU Blinn TEAM

Transition Academic Programs

Texas A&M University



Overview

- Background
- Basics
- Benefits
- Breakdown





Background



- Factors that facilitated TEAM
 - A&M operating at maximum capacity
 - Increasing number of applicants
 - Corresponding increase in denial of qualified applicants
 - Large number of Blinn transfers
 - History of close collaboration
- TEAM partnership signed June '01
- Partnership renewed June '06
- Renewed again June '11





Basics

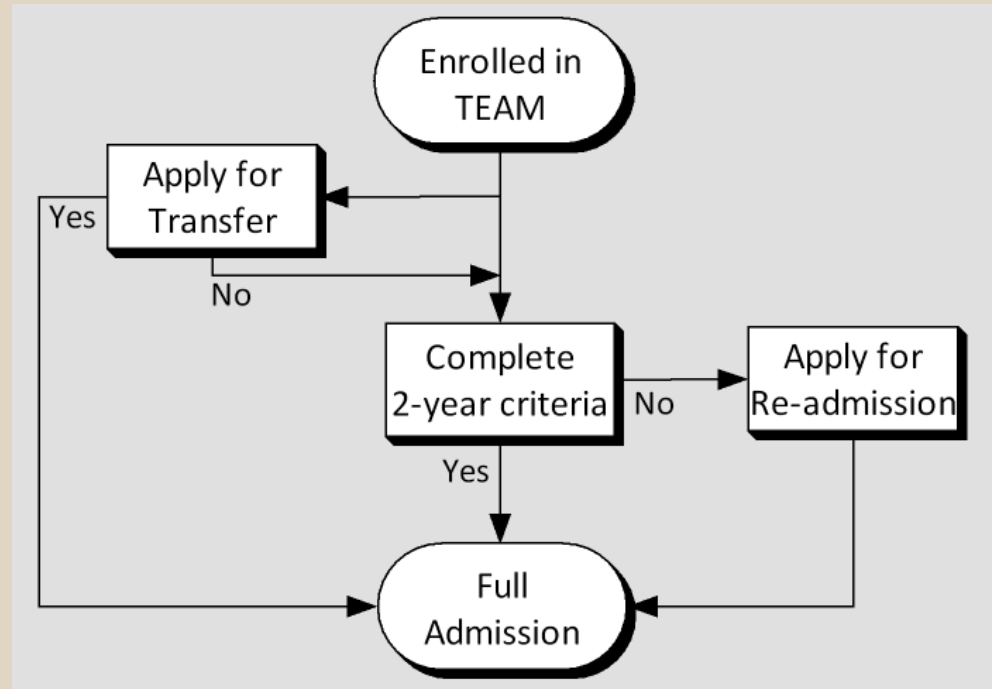
- TEAM students meet all freshman admission requirements
 - Selected from the qualified regular applicants
- 2-year program requirements guarantee full admission (but not a particular major)
 - 45 Blinn credit hours with 3.0 GPA
 - 15 A&M credit hours with 3.0 GPA
- Students co-enroll in 1 or 2 A&M courses & the rest at Blinn.
- Application for early transfer admission allowed & encouraged
- Students who do not earn full admission by above methods may become eligible for readmission as A&M former students.





3 Methods of Admission from TEAM:

1. Transfer
 - 45 Blinn hrs / 3.0 GPA
 - 15 A&M hrs / 3.0 GPA
2. Complete TEAM
3. Readmission





Benefits (to students)

- Four-year flagship university experience
- Financial aid eligibility
- A&M dorm residence
- A&M sporting events
- Blinn cost savings
- Blinn smaller class sizes
- Student activities at both schools





Benefits (to students)

TEAM Student (15 hrs)

Blinn (10 hrs)

Tuition \$920

Fees 370

A&M (5 hrs)

Tuition 883

Fees 840

TOTAL \$ 3,013

A&M Student (15 hrs)

Tuition \$ 2,648

Fees 1,605

TOTAL \$4,523

TEAM Students may save \$1,500 per semester

*Costs represent Fall 2013 estimates



Benefits (to A&M)

- Admission of quality students who would have otherwise been denied
- Increased lower division enrollment without decreasing upper division capacity and resources
- Places A&M in a leadership role in seeking creative ways of admitting transfer students
 - State Legislature interest
 - Queries from other universities
 - Purdue
 - E. Kentucky
 - Baylor
 - Texas State
 - Utah State
 - North Carolina
 - TAMU San Antonio





Benefits (to Blinn)

- Collaborative partnership with a major university
- Admission of academically prepared students
 - Improves classroom learning environment
 - Contributes to Blinn having the highest transfer rate to four-year schools
- Increased enrollment

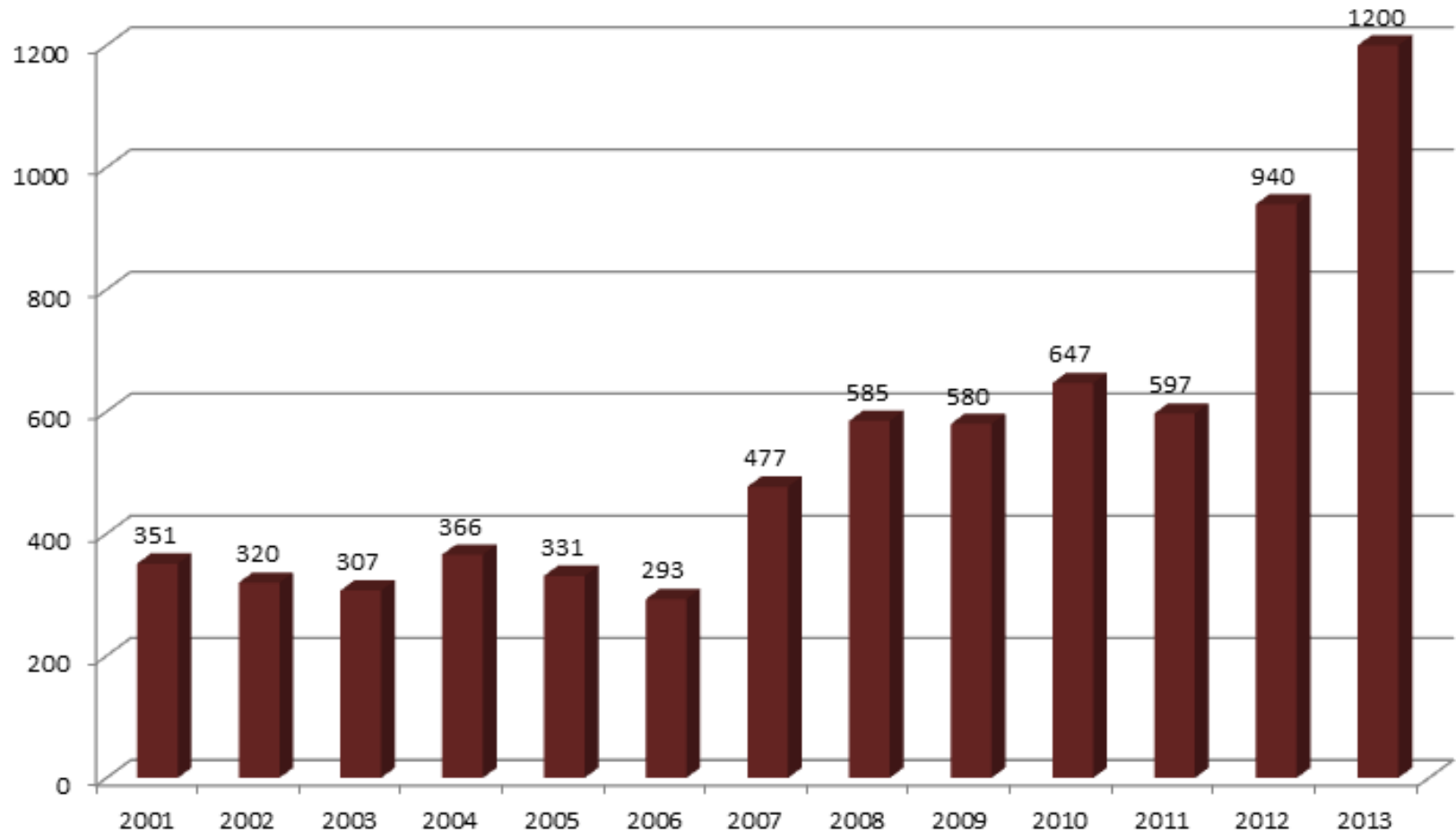


TEAM



Breakdown

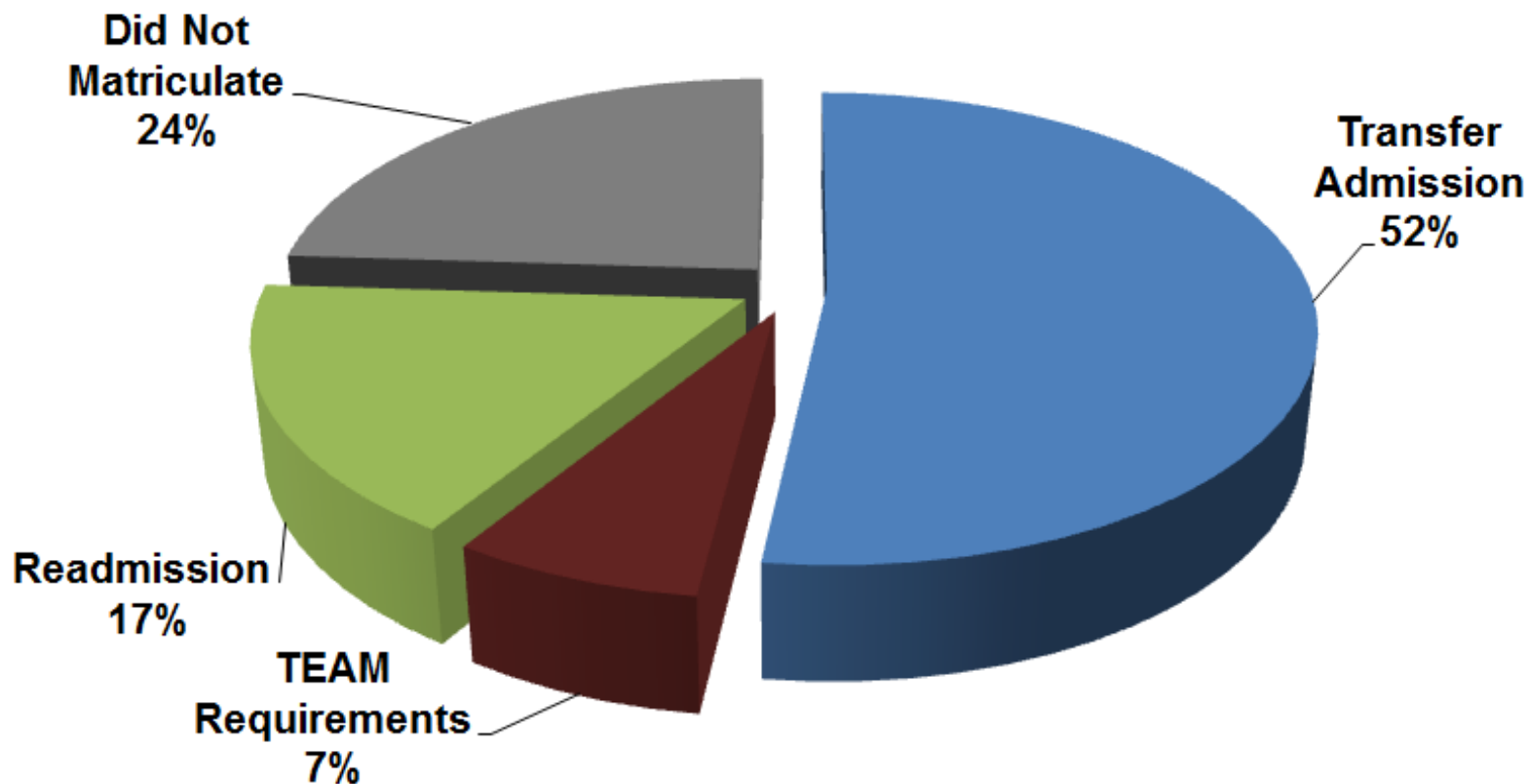
TEAM Participation





Breakdown

TEAM Transitions as of Fall 2012





Breakdown

- TEAM is entering its 13th year
 - 5,800 participants since implementation
 - Estimate of Freshmen for Fall 2013 = 1,200
- Three-fourths of students matriculate to A&M
 - State transfer rate – 27%*
 - Blinn transfer rate – 49%**
- Graduation rate of those who matriculate = 88%
 - 10% of TEAM graduates earn Latin Honors

* Creating & Facilitating Effective Statewide Transfer Pathways. Online: www.thecb.state.tx.us

** College Profile Blinn College. Online: <http://comparecollegetx.com/college/Blinn-College-TX>



Lessons Learned

- Need for a partnership must exist.
- Support and commitment of governance boards and administration is critical.
 - Texas Higher Education Coordinating Board
 - Texas A&M University System Board of Regents
 - Blinn College Board of Trustees
 - Presidents, chief academic officers, chief student affairs officers, deans, department heads
- Designate a leader from each institution.
- Establish guidelines to facilitate communication among faculty & staff partners.





Lessons Learned

- Identify critical issues early:
 - Admissions
 - Faculty resistance
 - Co-enrollment issues (financial aid)
 - Technology interfaces
- Implementation Committee
 - Admissions Subcommittee
 - Academic Affairs Subcommittee
 - Student Affairs Subcommittee
 - Financial Aid Subcommittee
- Oversight and Coordination Committee initially responsible for periodic evaluation
 - This can be subsequently delegated



BLINN COLLEGE



TEXAS A&M
UNIVERSITY

TAMU Blinn TEAM Program QUESTIONS?

Dr. Kriss H. Boyd

Executive Director

Transition Academic Programs

Texas A&M University

Dr. John O. Beaver

Dean of Academic Affairs

Bryan Campus

Blinn College

Dr. Russ T. Graves

Director, TAMU Blinn TEAM

Transition Academic Programs

Texas A&M University
